



FOUNDRY LICENSING TOOLS USER GUIDE

VERSION 7.1V1

FLT 7.1v1 User Guide. Copyright © 2016 The Foundry Visionmongers Ltd. All Rights Reserved. Use of this User Guide and the software is subject to an End User License Agreement (the "EULA"), the terms of which are incorporated herein by reference. This User Guide and software may be used or copied only in accordance with the terms of the EULA. This User Guide, the software and all intellectual property rights relating thereto are and shall remain the sole property of The Foundry Visionmongers Ltd. ("The Foundry") and/or The Foundry's licensors.

The EULA can be read in the Appendices.

The Foundry assumes no responsibility or liability for any errors or inaccuracies that may appear in this User Guide and this User Guide is subject to change without notice. The content of this User Guide is furnished for informational use only. No part of this manual may be reproduced, stored in a retrieval system, or transmitted in any form without the prior written permission of The Foundry.

In addition to those names set forth on this page, the names of other actual companies and products mentioned in this User Guide (including, but not limited to, those set forth below) may be the trademarks or service marks, or registered trademarks or service marks, of their respective owners in the United States and/or other countries. No association with any company or product is intended or inferred by the mention of its name in this User Guide.

Linux ® is a registered trademark of Linus Torvalds.

Windows ® is the registered trademark of Microsoft Corporation.

Mac, Mac OS X, Snow Leopard, Lion, Mountain Lion, Mavericks, Shake, Final Cut Pro and QuickTime are trademarks of Apple, Inc., registered in the U.S. and other countries.

The Foundry
5 Golden Square
London
W1F 9HT
UK

Rev: Wednesday, July 13, 2016

CONTENTS

Quick Start

About Licenses	6
Free Trial Licenses	7
Activation Keys	7
Purchasing an Activation Key	7
How to Use Your Activation Key	8
Node Locked and Floating Licenses	9
Windows	9
Mac OS X	12
Linux	14
More Information	16

Licensing on a Single Machine

About Licenses	17
Activation Keys	18
Purchasing an Activation Key	18
How to Use Your Activation Key	19
Node Locked Licenses	21
Purchasing a Node Locked License	21
Installing a Node Locked License	23
License Administration	27
Where are the License Keys and Log Files?	27
Moving the License Keys and Log Files	28
Appending to an Existing License	28
More Information	29

Licensing over a Network

Notation	30
About Floating Licenses	30
Purchasing a Floating License	31
Displaying Your System ID	31
Installing a Floating License	33
Windows	33
Mac OS X	38

Linux	42
License Administration	45
Where are the FLEXlm and RLM Files?	46
Moving the FLEXlm and RLM Files	46
When is a License Taken or Dropped?	49
Capping Licenses	52
Appending to an Existing License	53
The <server_name> Variable	55
Replace Licenses	55
Which RLM Port?	56
Managing the License Server	56
Starting the License Server	56
Stopping the License Server	57
Viewing the License Server Log	57
RLM Web Server	58
Useful Commands for System Administrators	60
Removing FLT	61
On Windows	61
On Mac OS X	62
On Linux	62
More Information	62

Troubleshooting Licenses

Firewalls	63
Windows	63
Mac OS X	70
Windows Hidden Files	72
FLU Reporting More Than One System ID	72
Node Locked and Client Licenses	73
Accessing the RLM Web Server on Mac OS X	73
Contacting Support	73
Using the Diagnostics Tool in GUI Mode	74
Using the Diagnostics Tool in Command Line Mode	74

Appendix A: Release Notes

FLT 7.1v1	75
FLT 7.0v5	77
FLT 7.0v4	78
FLT 7.0v3	78

FLT 7.0v2	79
FLT 7.0v1	81
FLT 6.0v4	82
FLT 6.0v3	83
FLT 6.0v2	84
FLT 6.0v1	84

Appendix B: License Syntax

Node Locked License Syntax	86
FLEXIm	86
RLM	87
Floating License Syntax	87
FLEXIm	87
RLM	88
Client License Syntax	89
FLEXIm	89
RLM	89

Appendix C: FLT Variables

Environment Variables FLT Recognizes	90
Setting Environment Variables	91
Windows	91
Mac OS X	92
Linux	93

Appendix D: EULA

End User License Agreement (EULA)	94
-----------------------------------	----

Quick Start

In a hurry? No time to read the whole user guide? We understand. Read this section—it'll tell you how to use your activation key or install your license.

The Foundry Licensing Tools' default settings do not support RLM licensing on virtual machines (VMs). If you have any questions regarding licensing on VMs, please visit supportportal.thefoundry.co.uk for assistance.

Alternatively, if you want to know more about licensing, see [Licensing on a Single Machine](#) or [Licensing over a Network](#).

About Licenses

All The Foundry products built between October 2005 and October 2010 were licensed using FLEXlm. The Foundry is currently migrating its products to activation key-based licensing and has chosen to use RLM for the back end licensing.

To find out whether your product uses FLEXlm or RLM licensing, please refer to the product's documentation.

To license one of our products, you need one of the following:

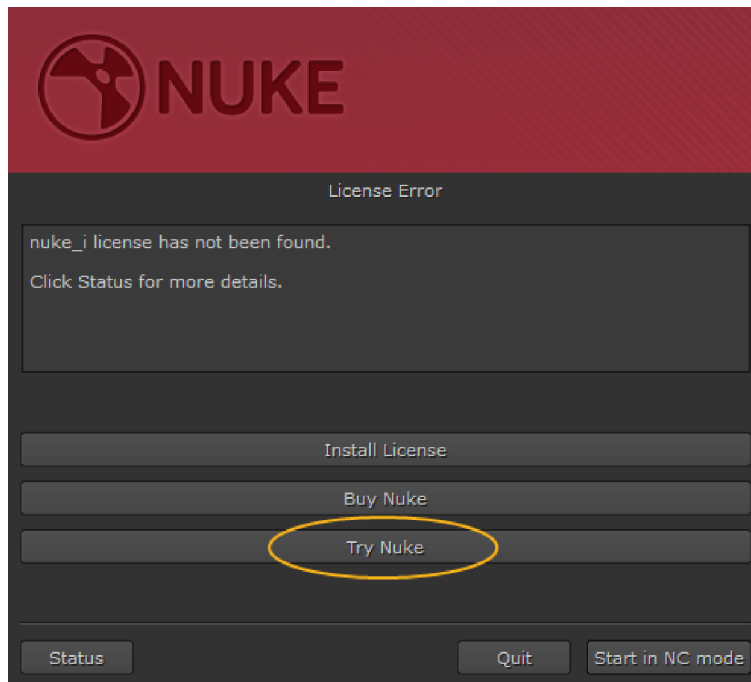
- **Free trial license.** This enables one of our products to work on one particular machine for 15 days. See [Free Trial Licenses](#).
- **An activation key.** An activation key can be used as an automated path to a node locked license, allowing you to use The Foundry products on a single machine. They look something like this:
`mari-0101-77d3-99bd-a977-93e9-8035`
See [Activation Keys](#).
- **A node locked license.** This enables one of our products to work on one particular machine. It is locked to a unique number on that machine.
- **A floating license.** This enables one of our products to work on any networked client machine. The floating license should be put on the server and is locked to a unique number on that server.
See [Node Locked and Floating Licenses](#).

If you want to know what a license looks like, have a look at [Appendix B: License Syntax](#) for a description of the file syntax.

Free Trial Licenses

If you simply want to obtain a free trial license for 15 days, you can:

- launch your product and, if a **Licensing** dialog appears, click the **Try...** button, or



- if your product doesn't have a **Licensing** dialog, you may be able to obtain a trial license from our website at www.thefoundry.co.uk. On the product page, click **Free 15 day trial** and follow the instructions.

You can only install a trial license once for each product on a single machine.

Activation Keys

This section tells you how to use an activation key with your product.

Purchasing an Activation Key

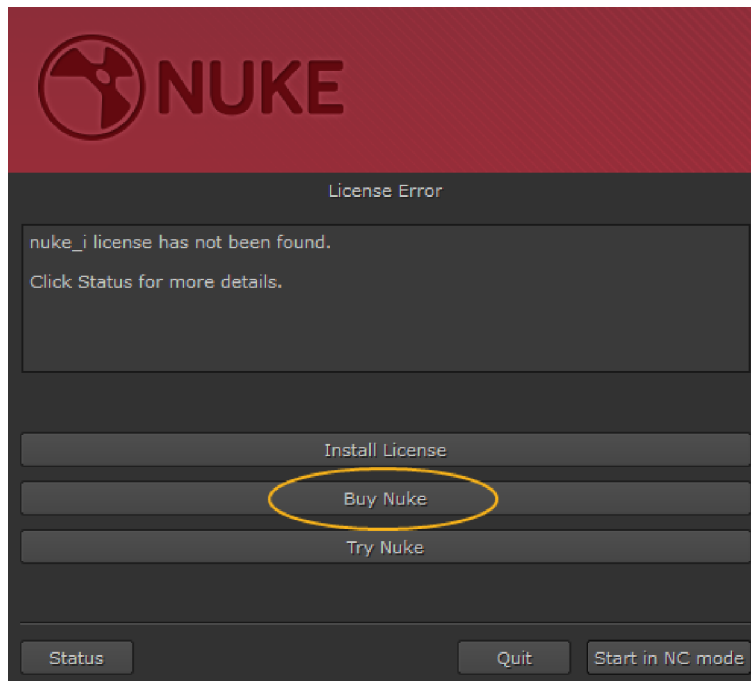
If you've been supplied with something that looks similar to this:

mari-0101-3733-eeda-8376-df83-7235

you have an activation key and you can activate your product.

If your product uses activation key-based licensing but you don't yet have an activation key, you can purchase one by:

- using the **Buy...** button on the **Licensing** dialog when you first launch your product,



- going to our web site at www.thefoundry.co.uk,
- e-mailing us at sales@thefoundry.co.uk,
- phoning our London office at +44 20 7479 4350 or our Los Angeles office at +1 (310) 399 4555.

Once you have an activation key, proceed to [How to Use Your Activation Key](#).

How to Use Your Activation Key

If you are using a product that has a **Licensing** dialog (such as Mari or Hiero) and currently have no license, or are running a temporary license, your product prompts you at start-up to enter your activation key into the **Licensing** dialog. This step is skipped if:

- you've already activated a permanent license, or
- you're trying to activate a product that doesn't have a **Licensing** dialog (for example, a set of plug-ins). If this is the case, go to <http://www.thefoundry.co.uk/support/licensing/activate-product/>, enter your activation key into the field provided, and follow the instructions on screen.

If you're trying to activate a product using the **Licensing** dialog, do the following:

1. Launch your product.
The **Licensing** dialog displays.

2. Click **Install License**.
3. Click **Activation Key / License Text**.
4. Enter your activation key and click **Install**.

Your product connects to our activation server, retrieves the correct license key for your system, and installs it.
Your product launches when the download and installation are complete.

Node Locked and Floating Licenses

This section tells you how to obtain and install node locked and floating licenses for your product.

The instructions for installing node locked and floating licenses depend on your operating system, so before you do anything else choose one of the following:

- To install a license on Windows, see [Windows](#).
- To install a license on Mac OS X, see [Mac OS X](#).
- To install a license on Linux, see [Linux](#).

Windows

This section tells you how to get your license working on Windows.

Purchasing a License

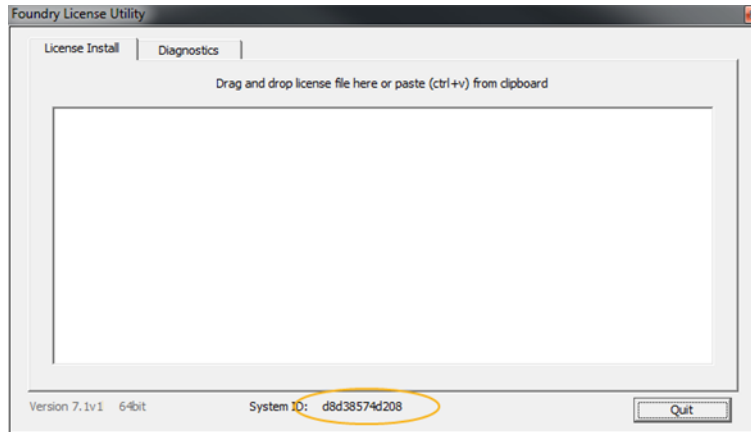
You can purchase license keys by:

- going to our web site at www.thefoundry.co.uk,
- e-mailing us at sales@thefoundry.co.uk,
- phoning our London office at +44 20 7479 4350 or our Los Angeles office at +1 (310) 399 4555.

To generate a license key, we need to know your System ID. The System ID returns a unique number for your computer. We lock our license keys to the System ID.

For floating licenses, we need to know the System ID of the machine that serves the licenses across the network.

To display your System ID, download the Foundry License Utility (FLU) from www.thefoundry.co.uk/support/licensing/ and run it. The System ID is displayed at the bottom of the window, as highlighted.



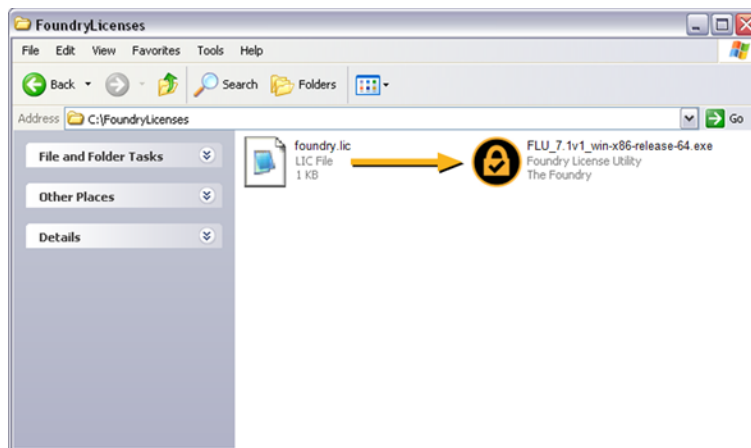
NOTE: In most cases, our licensing tools find the RLM System ID, check that FLEXlm accepts the same ID, and then display that ID. However, on rare occasions, you can have two System IDs reported. If this is the case, both System IDs are displayed, like this:

R00ffb79aefc9:X00ffb79aefa9

When purchasing a license, you should send us the entire string with both IDs.

Installing a License Key

Once a license has been generated for you, we e-mail you a zip file containing the license key and instructions on how to obtain the correct version of the Foundry License Utility (FLU). To check and install the license key, install the Windows FLU and drag the license file onto the FLU application.



If you installed a node locked license key, you're done.

When you install a floating license key, the license server address is displayed on screen:

<number>@<license server name>

You should make a note of the address, as you'll need it to activate the client machines. Then, proceed to [Installing the Foundry Licensing Tools \(FLT\) on the License Server](#).

Installing the Foundry Licensing Tools (FLT) on the License Server

Having installed a floating license, you need to install some additional software (FLT) to manage the licenses on your network. Then you need to tell the client machines where to find the licenses.

1. Download FLT_7.1v1_win-x86-release-64.exe from our web site (www.thefoundry.co.uk/support/licensing/) and install it on the Windows computer that you want to serve the licenses across the network.
The license server starts automatically after installation (and whenever you restart the machine).
2. To check the server status, click **Start > All Programs > The Foundry > FLT 7.1v1 > Foundry License Utility**, view the **FLEXlm Server** or **RLM Server** tab, and click **Refresh Log**.
3. If the license server fails to start, navigate to **Control Panel > Systems and Security > Administrative Tools > Services**. Then, select the appropriate service:
 - For FLEXlm: **Foundry FLEXlm Server**
 - For RLM: **Foundry License Server**

Click **Start** and check the server status again.



NOTE: If you have a firewall on your license server, this blocks all requests for licenses from your clients. So all that good work you've done in setting up your Foundry License Server will be for nothing unless you fix this. See [Firewalls](#).

4. Proceed to [Telling the Client Machines Where to Find the Licenses](#).

Telling the Client Machines Where to Find the Licenses

To point your product at the license server, do one of the following:

- If your product displays a **Licensing** dialog when you launch it, click **Install License** and then **Use Server**. Type **<number>@<server name>** (for example, **4101@red**) and click **Install**. Your client retrieves a license from the License Server and launches.
- Download the Foundry License Utility (FLU) from our website (www.thefoundry.co.uk/support/licensing/) and launch it. Make sure you are viewing the **License Install** tab and copy and paste in an RLM server line:

```
HOST <server name> any <port>
```

For example: **HOST red any 4101**

This creates and installs both a FLEXlm and RLM client license.

Repeat this process for each machine you wish to have access to licenses on the server.

Mac OS X

This section tells you how to get your license working on Mac OS X.

Purchasing a License

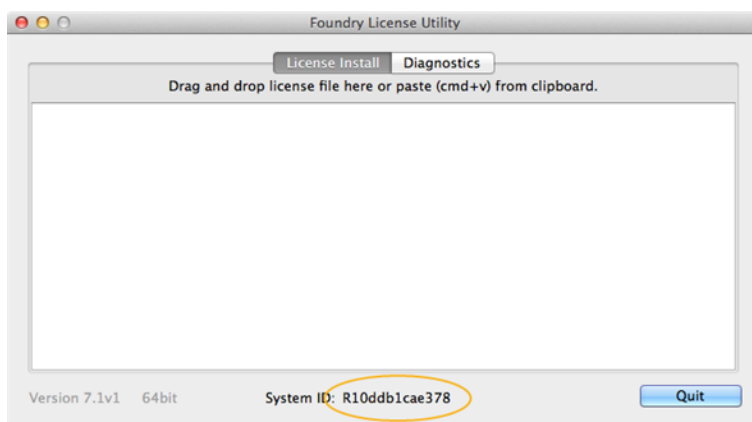
You can purchase license keys by:

- going to our web site at www.thefoundry.co.uk,
- e-mailing us at sales@thefoundry.co.uk,
- phoning our London office at +44 20 7479 4350 or our Los Angeles office at +1 (310) 399 4555.

To generate a license key, we need to know your System ID. The System ID returns a unique number for your computer. We lock our license keys to the System ID.

For floating licenses, we need to know the System ID of the machine that serves the licenses across the network.

To display your System ID, download the Foundry License Utility (FLU) from www.thefoundry.co.uk/support/licensing/ and run it. The System ID is displayed at the bottom of the window, as highlighted.



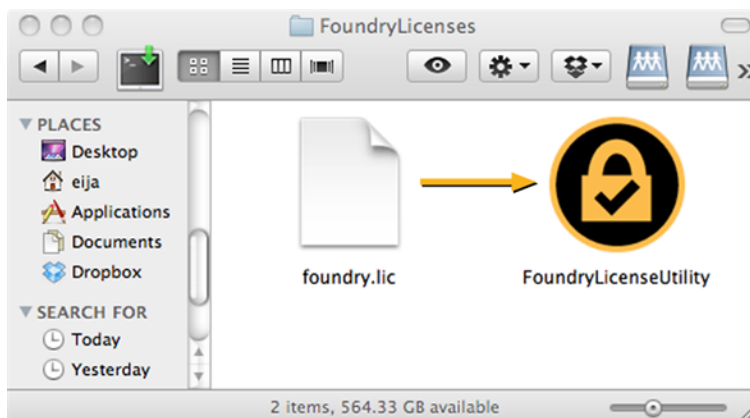
NOTE: In most cases, our licensing tools find the RLM System ID, check that FLEXlm accepts the same ID, and then display that ID. However, on rare occasions, you can have two System IDs reported. If this is the case, both System IDs are displayed, like this:

```
R00ffb79aefc9:X00ffb79aefa9
```

When purchasing a license, you should send us the entire string with both IDs.

Installing a License Key

Once a license has been generated for you, we e-mail you a zip file containing the license key and instructions on how to obtain the correct version of the Foundry License Utility (FLU). To check and install the license key, install the Mac OS X FLU and drag the license file onto the FLU application.



If you installed a node locked license key, you're done.

When you install a floating license key, the license server address is displayed on screen:

<number>@<license server name>

You should make a note of the address, as you'll need it to activate the client machines. Then, proceed to [Installing the Foundry Licensing Tools \(FLT\) on the License Server](#).

Installing the Foundry Licensing Tools (FLT) on the License Server

Having installed a floating license, you need to install some additional software (FLT) to manage the licenses on your network. Then you need to tell the client machines where to find the licenses.

1. Download FLT_7.1v1_mac-x86-release-64.dmg from our web site (www.thefoundry.co.uk/support/licensing/) and install it on the Mac that you want to serve the licenses across the network.
The license server starts automatically after installation (and whenever you restart the machine).
2. To check the server status, navigate to **/Applications/TheFoundry/LicensingTools7.1**, double-click on **Foundry License Utility**, view the **FLEXlm Server** or **RLM Server** tab, and click **Refresh Log**.
3. Proceed to [Telling the Client Machines Where to Find the Licenses](#).

Telling the Client Machines Where to Find the Licenses

To point your product at the license server, do one of the following:

- If your product displays a **Licensing** dialog when you launch it, click **Install License** and then **Use Server**. Type **<number>@<server name>** (for example, **4101@red**) and click **Install**. Your client retrieves a license from the License Server and launches.

- Download the Foundry License Utility (FLU) from our website (www.thefoundry.co.uk/support/licensing/) and launch it. Make sure you are viewing the **License Install** tab and copy and paste in an RLM server line:

```
HOST <server name> any <port>
```

For example: **HOST red any 4101**

This creates and installs both a FLEXlm and RLM client license.

Repeat this process for each machine you wish to have access to licenses on the server.

Linux

This section tells you how to get your license working on Linux.

Purchasing a License

You can purchase license keys by:

- going to our web site at www.thefoundry.co.uk,
- e-mailing us at sales@thefoundry.co.uk,
- phoning our London office at +44 20 7479 4350 or our Los Angeles office at +1 (310) 399 4555.

To generate a license key, we need to know your System ID. The System ID returns a unique number for your computer. We lock our license keys to the System ID.

For floating licenses, we need to know the System ID of the machine that serves the licenses across the network.

To display your System ID, download the Foundry License Utility (FLU) from www.thefoundry.co.uk/support/licensing/ and run it from the command line:

```
<download location>/FoundryLicenseUtility -i
```



NOTE: The <download location> refers to the location where you saved the Foundry Licensing Utility.



NOTE: In most cases, our licensing tools find the RLM System ID, check that FLEXlm accepts the same ID, and then display that ID. However, on rare occasions, you can have two System IDs reported. If this is the case, both System IDs are displayed, like this:

```
R00ffb79aefc9:X00ffb79aefa9
```

When purchasing a license, you should send us the entire string with both IDs.

Installing a License Key

1. Once a license has been generated for you, we e-mail you a **.tgz** file containing the license key and instructions on how to obtain the correct version of the Foundry License Utility (FLU). Gunzip or untar the file and save the FLU and your license key to a folder of your choice.

2. Navigate to the location of the FLU_7.1v1_linux-x86-release-64.tgz file.

3. Type the following commands to extract and install the FLU. Note that you need to replace **[my license]** with the location of your license key.

```
tar xvzf FLU_7.1v1_linux-x86-release-64.tgz
cd FLU_7.1v1_linux-x86-release-64
./FoundryLicenseUtility -l [my license]
```

For example, if you saved your license key to **/tmp/foundry.lic**, the last line should be:

```
./FoundryLicenseUtility -l /tmp/foundry.lic
```

This checks the license key and copies it to the correct directory.

4. If you installed a node locked license key, you're done.

If you installed a floating license key, the license server address is displayed on screen:

```
<number>@<license server name>
```

You should make a note of the address, as you'll need it to activate the client machines. Then, proceed to [Installing the Foundry Licensing Tools \(FLT\) on the License Server](#).

Installing the Foundry Licensing Tools (FLT) on the License Server

Having installed a floating license, you need to install some additional software (FLT) to manage the licenses on your network. Then you need to tell the client machines where to find the licenses.

1. Download FLT_7.1v1_linux-x86-release-64.tgz from our web site (www.thefoundry.co.uk/support/licensing/) on the Linux machine that you want to serve these licenses across the network and save it to **/tmp**.
2. Open a shell and, using root or admin permissions, type these commands to extract and install the Foundry Licensing Tools 7.1v1.

```
cd /tmp
tar xvzf FLT_7.1v1_linux-x86-release-64.tgz
cd FLT_7.1v1_linux-x86-release-64
./install.sh
```

The license server starts automatically after installation (and whenever you restart the machine).

3. To check the server status, navigate to **/usr/local/foundry/LicensingTools7.1** and enter:

```
./FoundryLicenseUtility -s status
```

This reports the status of both FLEXlm and RLM servers. If you only want to view one or the other, use one of the following commands instead:

```
./FoundryLicenseUtility -s status -t FLEXlm
./FoundryLicenseUtility -s status -t RLM
```

4. Proceed to [Telling the Client Machines Where to Find the Licenses](#).

Telling the Client Machines Where to Find the Licenses

To point your product at the license server, do one of the following:

- If your product displays a **Licensing** dialog when you launch it, click **Install License** and then **Use Server**. Type **<number>@<server name>** (for example, **4101@red**) and click **Install**. Your client retrieves a license from the License Server and launches.
- Download the Foundry License Utility (FLU) from our website (www.thefoundry.co.uk/support/licensing/). Gunzip or untar the file and save the FLU to a folder of your choice. Then, launch a shell and navigate to the location of the FLU_7.1v1_linux-x86-release-64.tgz file. Type the following commands:

```
tar xvzf FLU_7.1v1_linux-x86-release-64.tgz
cd FLU_7.1v1_linux-x86-release-64
./FoundryLicenseUtility -c <port>@<server name>
```

For example, the last line might be:

```
./FoundryLicenseUtility -c 4101@red
```

This creates and installs both a FLEXlm and RLM client license.

Repeat this process for each machine you wish to have access to licenses on the server.

More Information

For a complete explanation of licenses, license syntax, alternative license directories, useful server commands, and much more, please read [Licensing on a Single Machine](#) or [Licensing over a Network](#).

To troubleshoot licenses, refer to [Troubleshooting Licenses](#).

Licensing on a Single Machine

This chapter tells you how to license your product on a single machine. If you want to license one of our products over a network instead, please read [Licensing over a Network](#).



NOTE: The Foundry Licensing Tools' default settings do not support RLM licensing on virtual machines (VMs). If you have any questions regarding licensing on VMs, please visit supportportal.thefoundry.co.uk for assistance.

About Licenses

All The Foundry products built between October 2005 and October 2010 were licensed using FLEXlm. The Foundry is currently migrating its products to activation key-based licensing and has chosen to use RLM for the back end licensing.

To find out whether your product uses FLEXlm or RLM licensing, please refer to the product's documentation.

To license one of our products on a single machine, you need either:

- **An activation key.** An activation key can be used as an automated path to a node locked license. It is a string of characters that represents your entitlement to a product license. You can use activation keys over the internet to create automatically installed full license keys, on a machine of your choice, using our activation server.

Activation keys are a flexible approach to selling licenses, requiring no System ID at the point of purchase, though activation can only occur once per activation key.

They look something like this:

```
mari-0101-77d3-99bd-a977-93e9-8035
```

For information on how to license one of our products using an activation key, see [Activation Keys](#).

- **A node locked license.** This is sometimes called an uncounted license. It enables one of our products to work on one particular machine. It is locked to a unique number on that machine. This license key does not work on a different machine and if you need it to, you'll have to transfer your license. Like activation keys, node locked licenses do not require additional licensing software to be installed.

Node locked FLEXlm licenses look like this:

```
INCREMENT furnace_ofx_i foundry 4.0 05-jul-2011 \  
  uncounted HOSTID=000ea641d7a1 ISSUED=8-feb-2011 \  
  SIGN="03C7 5A34 BDE8 D421 6C2B 8111 8151 972A \  
  14E2 C143 4C00 741F 730D\ 784A D392 B1D9 9C3F \  
  \
```

```
03FC DB2A E432 5EA7"
```

Node locked RLM licenses look like this:

```
LICENSE foundry mari_i 2011.1231 permanent uncoun ted share=h start=3-oct-2011
issued=3-oct-2011 _ck=fa062a5e5a
sig="60P0451P8JTKNGTUC2TR605Y300BQ63CKYJNYTG22GXS0AVA0DSFGSUJ8P8HJ1C5MX86UNS54M"
```

For further information about the structure of the license key, see [Node Locked License Syntax](#).

For information on how to license one of our products using a node locked license, see [Node Locked Licenses](#).



TIP: We also provide free 15-day trial licenses. See [Free Trial Licenses](#).

Activation Keys

This section tells you how to use an activation key with your product.

Purchasing an Activation Key

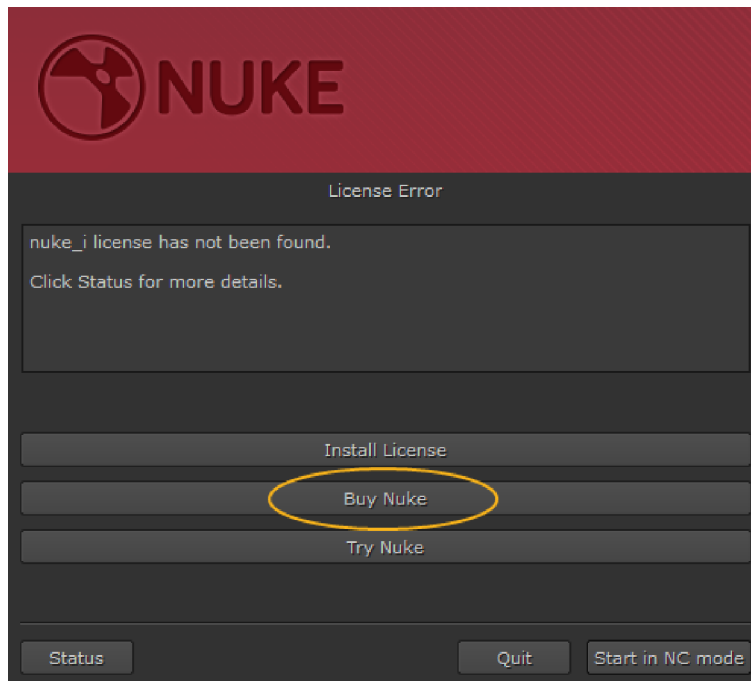
If you've been supplied with something that looks similar to this:

```
mari-0101-3733-eeda-8376-df83-7235
```

you have an activation key and you can activate your product.

If your product uses activation key-based licensing but you don't yet have an activation key, you can purchase one by:

- using the **Buy...** button on the **Licensing** dialog when you first launch your product,



- going to our web site at www.thefoundry.co.uk,
- e-mailing us at sales@thefoundry.co.uk,
- phoning our London office at +44 20 7479 4350 or our Los Angeles office at +1 (310) 399 4555.

Once you have an activation key, proceed to [How to Use Your Activation Key](#).

How to Use Your Activation Key

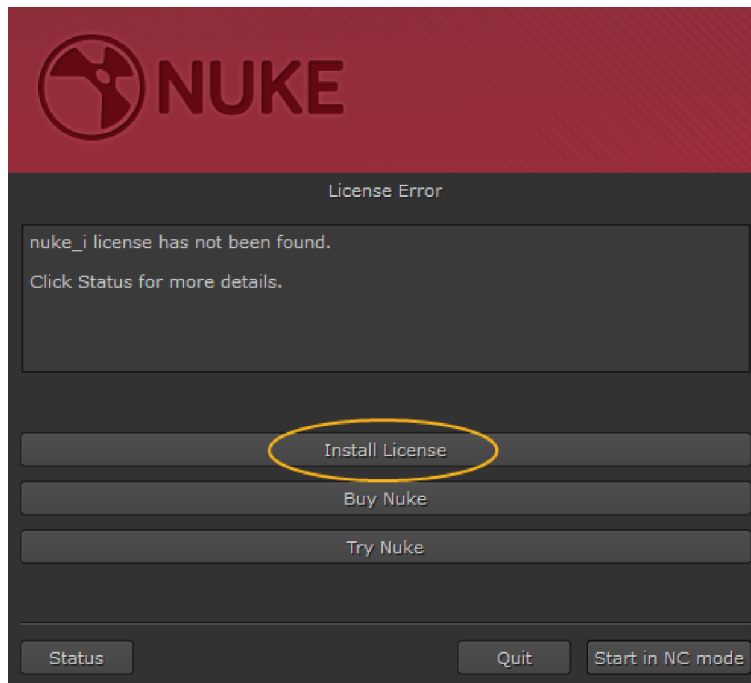
If you currently have no license, or are running a temporary license, your product prompts you at launch to enter your activation key into a **Licensing** dialog. This step is skipped if:

- you've already activated a permanent license, or
- you're trying to activate a product that doesn't have a **Licensing** dialog (for example, a set of plug-ins). If this is the case, go to <http://www.thefoundry.co.uk/support/licensing/activate-product/>, enter your activation key into the field provided, and follow the instructions on screen.

If you're trying to activate a product that does have a Licensing dialog, such as Nuke, do the following:

1. Launch your product.

The **Licensing** dialog displays.



2. Click **Install License** to display the available license installation options.
3. Click **Activation Key / License Text** and then either:
 - Enter the Activation Key string in place of **Insert Activation Key Here**. A license key typically looks something like this:
`nuke-0101-77d3-99bd-a977-93e9-8035`
 OR
 - Copy the license text and paste it over the **Copy/Paste license text here** string. License text typically looks something like this:

```
INCREMENT nuke_i foundry 2013.0929 29-sep-2014 uncounted \
HOSTID=000a957bfde5 ISSUED=29-sep-2012 \
SIGN="00DA 99A9 E744 217E 8AD3 E7AF E289 C0C6 \
6B23 2891 AC01 0F50 E64D 8847 8B22 3A40 2BE9 \
A268 B7C2 4BC0 36AF"
```
4. Click **Install**.
 Your product connects to our activation server, retrieves the correct license key for your system, and installs it.
 Your product launches when the download and installation are complete.



NOTE: If you access the internet through a proxy server, you may be prompted to enter the server name, port number, username, and password before the product can obtain a license.

Node Locked Licenses

This section tells you how to obtain and install node locked licenses for your product.

Purchasing a Node Locked License

You can purchase node locked license keys by:

- going to our web site at www.thefoundry.co.uk,
- e-mailing us at sales@thefoundry.co.uk,
- phoning our London office at +44 20 7479 4350 or our Los Angeles office at +1 (310) 399 4555.

To generate a license key, we need to know your System ID. The System ID (sometimes called Host ID, lmhostid, or rlmhostid) returns a unique number for your computer. We lock our license keys to the System ID. Just so you know what a System ID number looks like, here's an example:

```
000ea641d7a1
```

There are a number of ways to display your System ID, depending on your operating system.



NOTE: In most cases, our licensing tools find the RLM System ID, check that FLEXlm accepts the same ID, and then display that ID. However, on rare occasions, you can have two System IDs reported. If this is the case, both System IDs are displayed, like this:

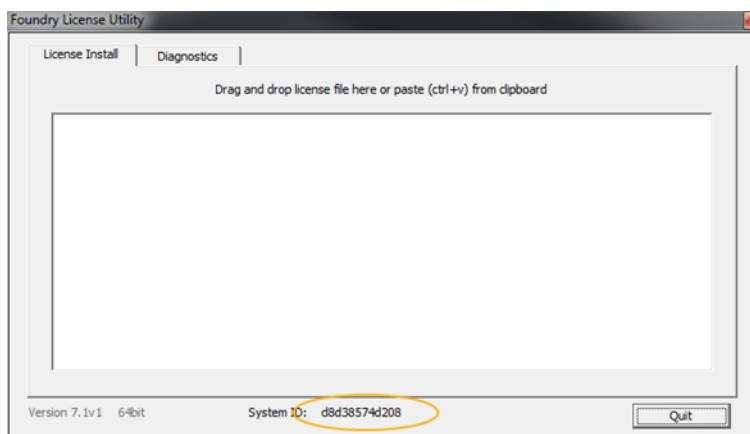
```
R00ffb79aefc9:X00ffb79aefa9
```

When purchasing a license, you should send us the entire string with both IDs.

On Windows

- Download the Foundry License Utility (FLU) from our website (www.thefoundry.co.uk/support/licensing/) and run it.

The System ID is displayed at the bottom of the window, as highlighted.



- Alternatively, you can run the following from a command prompt:

```
<download location>/FLU_7.1v1_win-x86-release-64.exe -i
```



NOTE: The <download location> refers to the location where you saved the Foundry Licensing Utility.

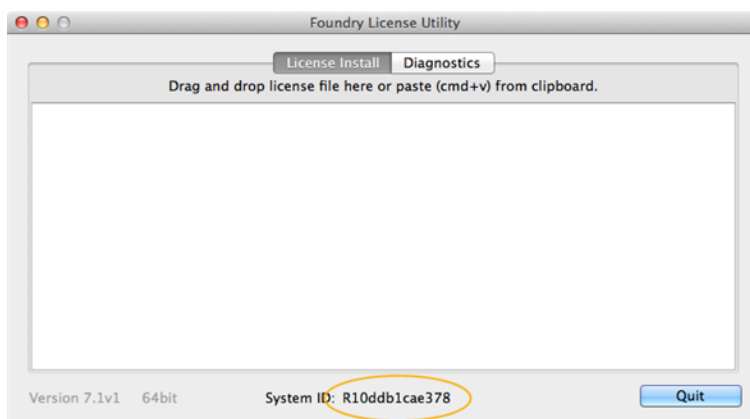


NOTE: If you use the FLU from a command prompt and don't pass it any arguments (such as **-i** in the above example), it launches in GUI mode.

On Mac

- Download the Foundry License Utility (FLU) from our website (www.thefoundry.co.uk/support/licensing/) and run it.

The System ID is displayed at the bottom of the window, as highlighted.



- Alternatively, you can run the following from the Terminal:

```
<download location>/FoundryLicenseUtility.app/Contents/MacOS/FoundryLicenseUtility -i
```



NOTE: The <download location> refers to the location where you saved the Foundry Licensing Utility.

On Linux

Download the Foundry License Utility (FLU) from our website (www.thefoundry.co.uk/support/licensing/) and run it from the command line:

```
<download location>/FoundryLicenseUtility -i
```



NOTE: The <download location> refers to the location where you saved the Foundry Licensing Utility.

Installing a Node Locked License

Once you have a node locked license, you can install it using two methods:

- **The automated method (recommended).** The easiest way to install a node locked license is to use The Foundry License Utility (FLU).

On Windows and Mac OS X, the FLU can be used both in graphical user interface (GUI) mode and from the command line.

On Linux, the FLU is a command line tool only.

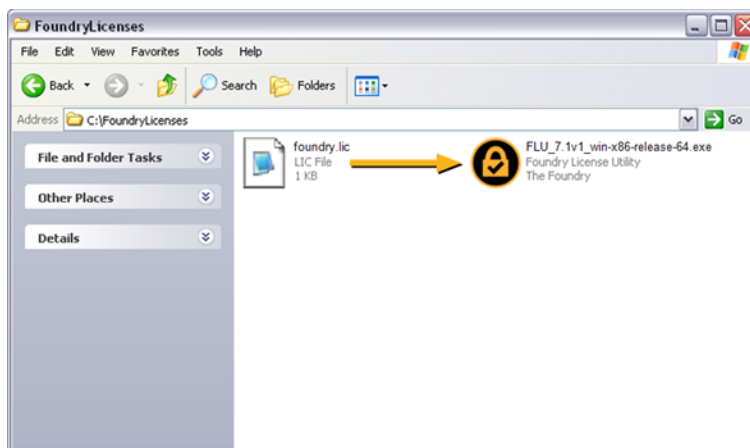
For more information, see one of the following:

- [The Automated Method on Windows](#)
- [The Automated Method on Mac OS X](#)
- [The Automated Method on Linux](#)
- **The manual method.** We do not recommend this, but you can install a node locked license key by hand. You just need the license key in a text file and your product. No other software is required. For more information, see [The Manual Method: Windows, Mac OS X, and Linux](#).

The Automated Method on Windows

Once a license has been generated for you, we e-mail you a zip file containing the license key and instructions on how to obtain the correct version of the Foundry License Utility (FLU). To check and install the license key, install the Windows version of the FLU and do one of the following:

- Drag the license file onto the FLU application;



- Or cut and paste the license key text directly into the **License Install** tab in the FLU application;
- Or if you double-click on the FLU application, it installs any file with a **.lic** file extension that it finds in the same directory as the application.



NOTE: If there is an error with any part of the license installation, this is reported in the FLU. You should also see a **Generate Report** button, which you can click to write the errors out to a file and then visit supportportal.thefoundry.co.uk for assistance.

If you are installing several licenses at the same time and only some of them fail validation, you can also click **Continue** to complete the installation of the valid licenses.

The above methods are the easiest way to install a license. However, if you prefer, you can also install a license from a command prompt. To do so:

1. Save the FLU and your license key to a folder of your choice. Note that the license file can be the original **.lic** file or the license in a plain text file (as long as the file has a **.lic** extension).
2. Click **Start**, type **cmd** and press **Return**.
This launches a command prompt.
3. Navigate to the location of the FLU_7.1v1_win-x86-release-64.exe file.
4. Type the following command to install the FLU and the license. Note that you need to replace **[my license]** with the location of your license key.

```
FLU_7.1v1_win-x86-release-64.exe -l[my license]
```

For example, if you saved your license key to **D:\Temp\foundry.lic**, the command should be:

```
FLU_7.1v1_win-x86-release-64.exe -l D:\Temp\foundry.lic
```

This checks the license key and copies it to the correct directory. You're done.

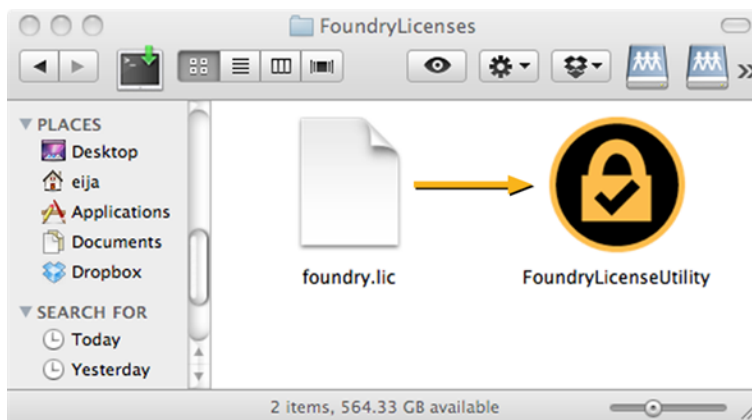


NOTE: If you use the FLU from a command prompt and don't pass it any arguments (such as **-l** in the above example), it launches in GUI mode.

The Automated Method on Mac OS X

Once a license has been generated for you, we e-mail you a zip file containing the license key and instructions on how to obtain the correct version of the Foundry License Utility (FLU). To check and install the license key, install the Mac OS X version of the FLU and do one of the following:

- Drag the license file onto the FLU application;



- Or cut and paste the license key text directly into the **License Install** tab in the FLU application;
- Or if you double click on the FLU application, it installs any file with a **.lic** file extension that it finds in the same directory as the application.



NOTE: If there is an error with any part of the license installation, this is reported in the FLU. You should also see a **Generate Report** button, which you can click to write the errors out to a file and then visit supportportal.thefoundry.co.uk for assistance.

If you are installing several licenses at the same time and only some of them fail validation, you can also click **Continue** to complete the installation of the valid licenses.

The above methods are the easiest way to install a license. However, if you prefer, you can also install a license from the command line. To do so:

1. Save the FLU and your license key to a folder of your choice. Note that the license file can be the original **.lic** file or the license in a plain text file.
2. Launch Terminal and navigate to the location of the FLU_7.1v1_mac-x86-release-64.zip file.
3. Type the following commands to extract and install the FLU and the license. Note that you need to replace **[my license]** with the location of your license key.

```
unzip FLU_7.1v1_mac-x86-release-64.zip
cd FoundryLicenseUtility.app/Contents/MacOS
./FoundryLicenseUtility -l [my license]
```

For example, if you saved your license key to **/tmp/foundry.lic**, the last line should be:

```
./FoundryLicenseUtility -l /tmp/foundry.lic
```

This checks the license key and copies it to the correct directory. You're done.

The Automated Method on Linux

Once a license has been generated for you, we e-mail you a **.tgz** file containing the license key and instructions on how to obtain the correct version of the Foundry License Utility (FLU).

1. Gunzip or untar the file and save the FLU and your license key to a folder of your choice. Note that the license file can be the original **.lic** file or the license in a plain text file.
2. Launch a command line and navigate to the location of the `FLU_7.1v1_linux-x86-release-64.tgz` file.
3. Type the following commands to extract the FLU and install the license. Note that you need to replace **[my license]** with the location of your license key.

```
tar xvzf FLU_7.1v1_linux-x86-release-64.tgz
cd FLU_7.1v1_linux-x86-release-64
./FoundryLicenseUtility -l [my license]
```

For example, if you saved your license key to **/tmp/foundry.lic**, the last line should be:

```
./FoundryLicenseUtility -l /tmp/foundry.lic
```

This checks the license key and copies it to the correct directory. You're done.



NOTE: If there is an error with any part of the license installation, this is reported on the command line. You should also see a **Generate Report** button, which you can click to write the errors out to a file and then visit supportportal.thefoundry.co.uk for assistance.

If you are installing several licenses at the same time and only some of them fail validation, you can continue to complete the installation of the valid licenses.

The Manual Method: Windows, Mac OS X, and Linux

If you wish, you can install a node locked license key by hand. The license key goes in any plain text file with a **.lic** file extension in a specific directory. The name of the file can be anything, but we recommend the following:

```
foundry.lic
```

Make sure you don't save the key in a rich text (**.rtf**) file as it won't work. You should also avoid using Word or other word processing programs to create license files, as these add invisible control characters that trip up the licensing and make it hard for us to diagnose the fault.

The recommended location for the license file varies depending on the operating system you are using, and is as follows:



NOTE: There are other directories that can be searched for license files. See [Moving the License Keys and Log Files](#).

On Windows 7

- If your product uses FLEXlm licensing:

C:\ProgramData\The Foundry\FLEXlm\

- If your product uses RLM licensing:

C:\ProgramData\The Foundry\RLM\



NOTE: The ProgramData folder may be hidden. You can make it visible using the **Folder Options** in the **Control Panel**. See [Windows Hidden Files](#).

On Mac OS X:

- If your product uses FLEXlm licensing:

/Library/Application Support/TheFoundry/FLEXlm/

- If your product uses RLM licensing:

/Library/Application Support/TheFoundry/RLM/

On Linux:

- If your product uses FLEXlm licensing:

/usr/local/foundry/FLEXlm/

- If your product uses RLM licensing:

/usr/local/foundry/RLM/

License Administration

The following section contains details on license management and administration, including license behavior, file location, and updating licenses.

Where are the License Keys and Log Files?

You can move the FLEXlm and RLM license keys and log files anywhere, but by default they are installed to the following directories. We'll refer to these locations as the **<data path>**.

<data path> on Windows:

C:\ProgramData\The Foundry\FLEXlm\

C:\ProgramData\The Foundry\RLM\



NOTE: The ProgramData folder may be hidden. You can make it visible using the **Folder Options** in the **Control Panel**. See [Windows Hidden Files](#).

<data path> on Mac OS X:

/Library/Application Support/TheFoundry/FLEXlm/

/Library/Application Support/TheFoundry/RLM/

<data path> on Linux:

```
/usr/local/foundry/FLEXlm/
/usr/local/foundry/RLM/
```

Moving the License Keys and Log Files

Moving the License File

If you move your node locked license key, you have to set an environment variable to point to the new location.

1. Move your node locked license key to a new location, for example:
`/home/licenses/mylicense.lic`
2. Now set the appropriate environment variable to point to the new location:
 - For FLEXlm licenses, the environment variable is **FOUNDRY_LICENSE_FILE**.
 - For RLM licenses, it is **foundry_LICENSE**.

For more information on setting environment variables, see [Setting Environment Variables](#).

Moving the Log File

By default, problems with licenses are written to:

```
<data path>/license.log
```

You can change the location by setting the appropriate environment variable to the directory of your choice, for example:

```
/home/fred/problems.log
```

For FLEXlm licenses, the environment variable is **FOUNDRY_LICENSE_LOG** and for RLM licenses, the variable is **foundry_LICENSE_LOG**.

For more information on setting environment variables, see [Setting Environment Variables](#).



TIP: A good command to use on very large log files to display the last 30 entries is:

```
tail -n 30 foundry.log
```

Note, however, that if you want to send the log file to the Support team, it should be the complete log file created using the diagnostics tool in the Foundry License Utility (FLU). See [Contacting Support](#).

Appending to an Existing License

You can add a new license to an existing key using two methods:

- Drop the license file onto the Foundry License Utility (FLU). This is the recommended method.

- Use the command line. This is **not** recommended for most users. However, you can add a new license key by editing the **foundry.lic** text file. Simply copy and paste the license to the end of your existing license file.

More Information

This user guide should cover all the information you need to use FLEXlm or RLM licenses for The Foundry products. However, it is not meant to be an exhaustive exploration of all the features available with FLEXlm or RLM licensing. For that, you should:

- see the FLEXnet Licensing End User Guide included in the Foundry Licensing Tools download or go to www.flexerasoftware.com.
- see the RLM Licensing End User Guide included in the Foundry Licensing Tools download or go to www.reprisesoftware.com.

Please be aware that advanced RLM features not discussed in this user guide are not supported with RLM licenses from The Foundry.

Licensing over a Network

This chapter tells you how to license your product over a network. If you want to license one of our products on a single machine instead, please read [Licensing on a Single Machine](#).



NOTE: The Foundry Licensing Tools' default settings do not support RLM licensing on virtual machines (VMs). If you have any questions regarding licensing on VMs, please visit supportportal.thefoundry.co.uk for more information.

Notation

Throughout this chapter, we refer to machines that serve licenses as servers and machines that ask for licenses as clients.

About Floating Licenses

A floating license running on a server enables one of our products to work on any networked client machine. Floating licenses are sometimes called **counted** licenses.

The floating license should be put on the server and is locked to a unique number on that server (see [Displaying Your System ID](#)). Floating licenses on a server require additional software to be installed. This software manages those licenses on the server, giving licenses out to client stations that want them. The software you need to manage these licenses is called the Foundry Licensing Tools (FLT), which can be freely downloaded from our web site.

Floating licenses often declare a port number. This is required if you have an internet firewall on your license server so that you can permit license communication while blocking others. See [Firewalls](#).

A floating FLEXlm license looks like this:

```
SERVER <server_name> 000EA641D7A1
VENDOR foundry
INCREMENT nuke_i foundry 3.0 05-jul-2012 5 \
ISSUED=8-feb-2006 SIGN="00FF 6A1B 735B A476 2069 0A10 6894 4903 \
E2CF A238 7A01 1A15 1808 7BCF 346C F59E 8899 F53C 2B13 E204 C7FD"
```

A floating RLM license looks like this:

```
HOST <server_name> d49a20b9be26 4101
ISV foundry
```

```
LICENSE foundry mari_i 2012.1231 permanent 20 share=h start=4 oct-2010 issued=4-oct-2010 _ck=fa072c6a5a
sig="60P0453JHKQBGTB1HH7E3HNW843UJ627TSF4CXR22H7KNMYHG1B99WBSNHS1UE7FCN2W3AY8KV"
```

For further information about the structure of the license key, see [Floating License Syntax](#).

For information on how to license one of our products using a floating license, see [Purchasing a Floating License](#) and [Installing a Floating License](#).

Purchasing a Floating License

You can purchase a floating license by:

- going to our web site at www.thefoundry.co.uk,
- e-mailing us at sales@thefoundry.co.uk,
- phoning our London office at +44 20 7479 4350 or our Los Angeles office at +1 (310) 399 4555.

To generate a license key, we need to know the System ID of the machine that acts as the server (not one of the clients). The System ID (sometimes called Host ID, lmhostid, or rlmhostid) returns a unique number for that computer. Just so you know what a System ID number looks like, here's an example:

```
000ea641d7a1.
```

To display your server machine's System ID, see [Displaying Your System ID](#).

Once you have provided us with your server machine's System ID number and a license key has been generated for you, you receive the license key in an e-mail or internet download. The license key is contained in a text file called **foundry.lic**. For information on what to do with the **foundry.lic** file, see [Installing a Floating License](#).

Displaying Your System ID

There are a number of ways to display your server machine's System ID, depending on your operating system.



NOTE: In most cases, our licensing tools find the RLM System ID, check that FLEXlm accepts the same ID, and then display that ID. However, on rare occasions, you can have two System IDs reported. If this is the case, both System IDs are displayed, like this:

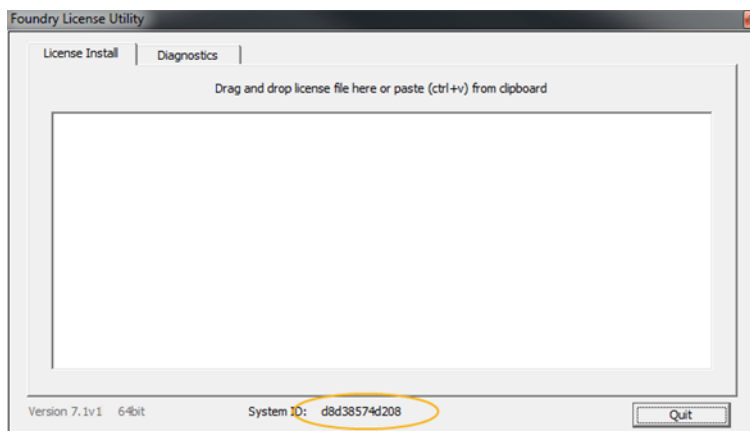
```
R00ffb79aefc9:X00ffb79aefa9
```

When purchasing a license, you should send us the entire string with both IDs.

On Windows

- Download the Foundry License Utility (FLU) from our website (www.thefoundry.co.uk/support/licensing/) and run it on the machine that acts as the server.

The System ID is displayed at the bottom of the window, as highlighted.



- Alternatively, you can run the following from a command prompt:

```
<download location>/FLU_7.1v1_win-x86-release-64.exe -i
```



NOTE: The <download location> refers to the location where you saved the Foundry Licensing Utility.

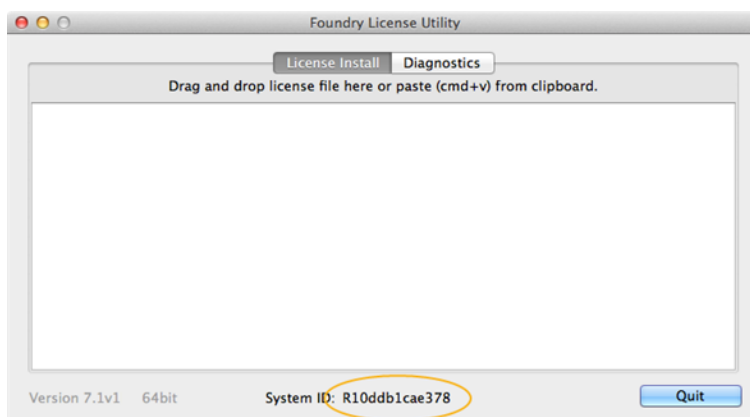


NOTE: If you use the FLU from a command line and don't pass it any arguments (such as **-i** in the above example), it launches in GUI mode.

On Mac

- Download the Foundry License Utility (FLU) from our website (www.thefoundry.co.uk/support/licensing/) and run it on the machine that acts as the server.

The System ID is displayed at the bottom of the window, as highlighted.



- Alternatively, you can run the following from the command line:

```
<download location>/FoundryLicenseUtility.app/Contents/MacOS/FoundryLicenseUtility -i
```



NOTE: The <download location> refers to the location where you saved the Foundry Licensing Utility.

On Linux

On the machine that acts as the server, download the Foundry License Utility (FLU) from our website (www.thefoundry.co.uk/support/licensing/) and run it from the command line:

```
<download location>/FoundryLicenseUtility -i
```



NOTE: The <download location> refers to the location where you saved the Foundry Licensing Utility.

Installing a Floating License

The Foundry Licensing Tools are supplied for Windows, Mac OS X, and Linux. To manage floating licenses across a network, you have to install the Foundry Licensing Tools on a license server together with your floating license key(s). Then you have to tell your client machines where to look for their license. How to do all this depends on your operating system:

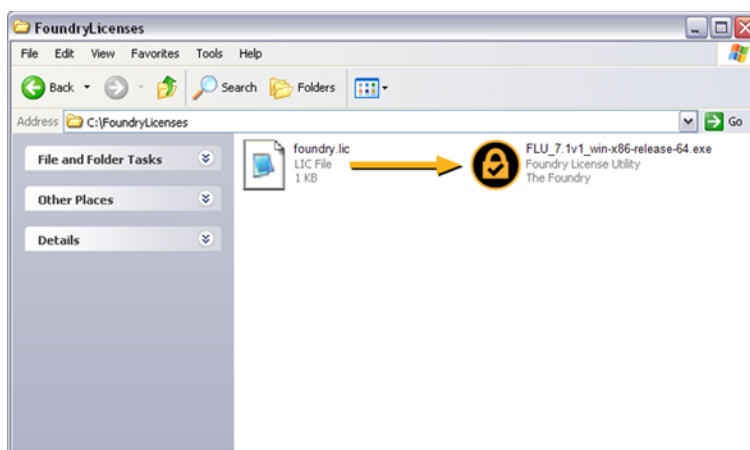
- If you're on Windows, see [Windows](#).
- If you're on Mac OS X, see [Mac OS X](#).
- If you're on Linux, see [Linux](#).

Windows

This section tells you how to get your floating license working on Windows.

Installing a Floating License on the License Server

1. Once a license has been generated for you, we e-mail you a zip file containing the license key and instructions on how to obtain the correct version of the Foundry License Utility (FLU). To check and install the license key, install the Windows version of the FLU and do one of the following:
 - Drag the license file onto the FLU application, or



- Cut and paste the license key text directly into the **License Install** tab in the FLU application, or
 - If you double-click on the FLU application, it installs any file with a **.lic** file extension that it finds in the same directory as the application.
2. The license server address is displayed on screen:
`<number>@<license server name>`
 You should make a note of the address as you'll need it to activate the client machines.
 3. Proceed to [Installing Foundry Licensing Tools \(FLT\) on the License Server](#).



NOTE: If there is an error with any part of the license installation, this is reported in the FLU. You should also see a **Generate Report** button, which you can click to write the errors out to a file and then visit supportportal.thefoundry.co.uk for assistance.

If you are installing several licenses at the same time and only some of them fail validation, you can also click **Continue** to complete the installation of the valid licenses.

You may also get a message saying that the license is not yet valid but may be valid in the future. This means the license has been installed successfully and will automatically become live on the license start date. You do not need to do anything further, but if you like, you can check that the server is up and the server log reports the same message (see [Viewing the License Server Log](#)).

Alternative Methods of Installing the License

The above methods are the easiest way to install a license. However, if you prefer, you can also install a license from a command prompt. To do so:

1. Save the FLU and your license key to a folder of your choice. Note that the license file can be the original **.lic** file or the license in a plain text file (as long as the file has a **.lic** extension).
2. Click **Start**, type **cmd** and press **Return**.
 This launches a command prompt.
3. Navigate to the location of the FLU_7.1v1_win-x86-release-64.exe file.

4. Type the following command to install the FLU and the license. Note that you need to replace **[my license]** with the location of your license key.

```
FLU_7.1v1_win-x86-release-64.exe -l[my license]
```

For example, if you saved your license key to **D:\Temp\foundry.lic**, the command should be:

```
FLU_7.1v1_win-x86-release-64.exe -l D:\Temp\foundry.lic
```

This checks the license key and copies it to the correct directory.

5. The license server address is displayed on screen:

```
<number>@<license server name>
```

You should make a note of the address as you'll need it to activate the client machines.

6. Proceed to [Installing Foundry Licensing Tools \(FLT\) on the License Server](#).



NOTE: If you use the FLU from a command prompt and don't pass it any arguments (such as **-l** in the example), it launches in GUI mode.

Alternatively, if you wish, you can install the license key by hand, though this is not recommended for most users. To do so:

1. Launch a text editor and create a plain text file. Avoid using Word or other word processing programs to create the file, as these add invisible control characters that trip up the licensing and make it hard for us to diagnose the fault.
2. Copy the license key and paste it into the plain text file.
3. Save the file with a **.lic** extension (not **.txt** or **.rtf**) in the following directory. The name of the file can be anything, but we recommend calling it **foundry.lic**.
 - FLEXlm licenses:
C:\ProgramData\The Foundry\FLEXlm\
 - RLM licenses:
C:\ProgramData\The Foundry\RLM\



NOTE: The ProgramData folder may be hidden. You can make it visible using the **Folder Options** in the **Control Panel**. See [Windows Hidden Files](#).



NOTE: There are other directories that can be searched for license files. See [Moving the FLEXlm and RLM Files](#).

4. If you installed an RLM license, create an options file and set a **TIMEOUT** or **TIMEOUTALL** period. This ensures that licenses are returned to the server if the server and client machines lose contact with each other (due to a network error, a crash, or some other failure). For more information, see [Setting a TIMEOUT or TIMEOUTALL Period](#).

If you installed a FLEXlm license, you can skip this step. FLEXlm licenses have a default timeout period of 7200 seconds (two hours).

5. Proceed to [Installing Foundry Licensing Tools \(FLT\) on the License Server](#).

Installing Foundry Licensing Tools (FLT) on the License Server

1. Download FLT_7.1v1_win-x86-release-64.exe from our web site (www.thefoundry.co.uk/support/licensing/) and install it on the Windows computer that you want to serve the licenses across the network.
The license server starts automatically after installation (and whenever you restart the machine).
2. To check the server status, click **Start > All Programs > The Foundry > FLT 7.1v1 > Foundry License Utility**, view the **FLEXlm Server** or **RLM Server** tab, and click **Refresh Log**.

To check RLM server status, you can also direct a web browser to the **http://<server_name>:4102** server page and click **Status** on the right.

3. If the license server fails to start, navigate to **Control Panel > Administrative Tools > Services**. Then, select the appropriate service:
 - For FLEXlm: **Foundry FLEXlm Server**
 - For RLM: **Foundry License Server**
 Click **Start** and check the server status again.



NOTE: If you have a firewall on your license server, this blocks all requests for licenses from your clients. So all that good work you've done in setting up your Foundry License Server will be for nothing unless you fix this. See [Firewalls](#).

4. Proceed to [Telling the Client Machines Where to Find the Licenses](#).

Telling the Client Machines Where to Find the Licenses

When you installed the floating license key on your server, you were provided with a **<port>@<server name>**. You need this to license clients.

There are several ways to license clients. Choose one of the following and repeat it for each machine you wish to have access to licenses on the server:

- If your product displays a **Licensing** dialog when you launch it, click **Install License** and then **Use Server**. Type **<number>@<server name>** (for example, **4101@red**) and click **Install**. Your client retrieves a license from the License Server and launches.

- Click **Start > All Programs > The Foundry > FLT 7.1v1 > Foundry License Utility** to launch the FLU. Make sure you are viewing the **License Install** tab and copy and paste in an RLM server line:

```
HOST <server name> any <port>
```

For example: **HOST red any 4101**

This creates and installs both a FLEXlm and RLM client license.

- Launch a command prompt. Navigate to the location of the **FoundryLicenseUtility.exe** file, by default:

C:\Program Files\The Foundry\LicensingTools7.1

Then, type the following command:

```
FoundryLicenseUtility.exe -c <port>@<server name>
```

For example:

```
FoundryLicenseUtility.exe -c 4101@red
```

This creates and installs both a FLEXlm and RLM client license.

- Set an environment variable on your client as follows:
 - If your product uses FLEXlm licensing, set the **FOUNDRY_LICENSE_FILE** environment variable on your client to point to the license server (for example, **@red**). If you have more than one server, you could use:

```
@red:@green.
```

If you have specified a particular server port number (30001) in the **foundry.lic** file on the server, you should set the environment variable to **30001@red**.

- If your product uses RLM licensing, set the **foundry_LICENSE** environment variable on your client to point to the license server (for example, **4101@red**). If you have more than one server, you could use:

```
4101@red:4101@green
```

If you are using a port other than 4101, replace 4101 with the port selected.

For more information on setting environment variables, see [Setting Environment Variables](#).

- Although not recommended, you can manually create a client license.
 - If your product uses FLEXlm licensing, copy the **foundry.lic** file from the server to:

```
C:\ProgramData\The Foundry\FLEXlm
```

Rename the file and call it **foundry_client.lic**. Edit the file so it looks like this:

```
SERVER snowball 000a957bade9
```

```
VENDOR foundry
```

```
USE_SERVER
```

or if you had your own server port number set:

```
SERVER snowball 000a957bade9 30001
```

```
VENDOR foundry
```

```
USE_SERVER
```

- If your product uses RLM licensing, copy the **foundry.lic** file from the server to:

```
C:\ProgramData\The Foundry\RLM
```

Rename the file and call it **foundry_client.lic**. Edit the file so it looks like this:

```
HOST red 000a957bade9 4101
```

or if you had your own server port number set:

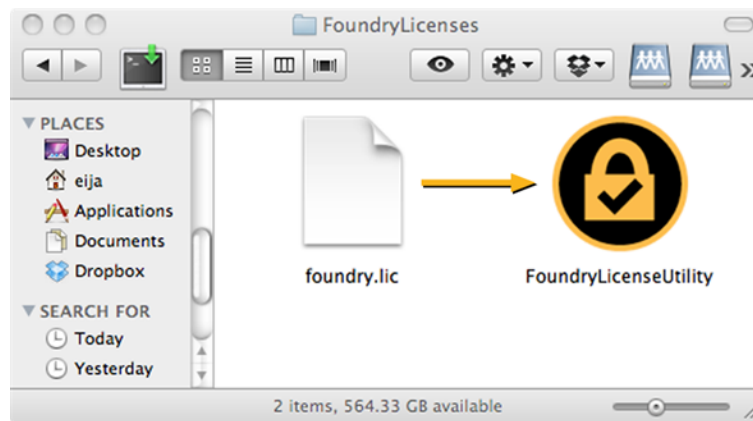
```
HOST red 000a957bade9 30001
```

Mac OS X

This section tells you how to get your floating license working on Mac OS X.

Installing a Floating License on the License Server

- Once a license has been generated for you, we e-mail you a zip file containing the license key and instructions on how to obtain the correct version of the Foundry License Utility (FLU). To check and install the license key, install the Mac OS X version of the FLU and do one of the following:
 - Drag the license file onto the FLU application, or



- Drag the license file onto the Foundry License Utility, or
 - Cut and paste the license key text directly into the **License Install** tab in the FLU application, or
 - If you double-click on the FLU application, it installs any file with a **.lic** file extension that it finds in the same directory as the application.
- The license server address is displayed on screen:


```
<number>@<license server name>
```

You should make a note of the address as you'll need it to activate the client machines.
 - Proceed to [Installing Foundry Licensing Tools \(FLT\) on the License Server](#).



NOTE: If there is an error with any part of the license installation, this is reported in the FLU. You should also see a **Generate Report** button, which you can click to write the errors out to a file and then visit supportportal.thefoundry.co.uk for assistance.

If you are installing several licenses at the same time and only some of them fail validation, you can also click **Continue** to complete the installation of the valid licenses.

You may also get a message saying that the license is not yet valid but may be valid in the future. This means the license has been installed successfully and will automatically become live on the license start date. You do not need to do anything further, but if you like, you can check that the server is up and the server log reports the same message (see [Viewing the License Server Log](#)).

Alternative Methods of Installing the License

The above methods are the easiest ways to install a license. However, if you prefer, you can also install a license from the command line. To do so:

1. Save the FLU and your license key to a folder of your choice. Note that the license file can be the original **.lic** file or the license in a plain text file (as long as the file has a **.lic** extension).
2. Launch a Terminal and navigate to the location of the FLU_7.1v1_mac-x86-release-64.zip file.
3. Type the following commands to extract and install the FLU and the license. Note that you need to replace **[my license]** with the location of your license key.

```
unzip FLU_7.1v1_mac-x86-release-64.zip
cd FoundryLicenseUtility.app/Contents/MacOS/
./FoundryLicenseUtility -l [my license]
```

For example, if you saved your license key to **/tmp/foundry.lic**, the last line should be:

```
./FoundryLicenseUtility -l /tmp/foundry.lic
```

This checks the license key and copies it to the correct directory.

4. The license server address is displayed on screen:

```
<number>@<license server name>
```

You should make a note of the address as you'll need it to activate the client machines.

5. Proceed to [Installing Foundry Licensing Tools \(FLT\) on the License Server](#).

Alternatively, if you wish, you can install the license key by hand, though this is not recommended for most users. To do so:

1. Launch a text editor and create a plain text file. Avoid using Word or other word processing programs to create the file, as these add invisible control characters that trip up the licensing and make it hard for us to diagnose the fault.
2. Copy the license key and paste it into the plain text file.
3. Save the file with a **.lic** extension (not **.txt** or **.rtf**) in the following directory. The name of the file can be anything, but we recommend calling it **foundry.lic**.

FLEXlm licenses: **/Library/Application Support/TheFoundry/FLEXlm/**

RLM licenses: **/Library/Application Support/TheFoundry/RLM/**



NOTE: There are other directories that can be searched for license files. See [Moving the FLEXlm and RLM Files](#).

- If you installed an RLM license, create an options file and set a TIMEOUT or TIMEOUTALL period. This ensures that licenses are returned to the server if the server and client machines lose contact with each other (due to a network error, a crash, or some other failure). For more information, see [Setting a TIMEOUT or TIMEOUTALL Period](#).

If you installed a FLEXlm license, you can skip this step. FLEXlm licenses have a default timeout period of 7200 seconds (two hours).

- Proceed to [Installing Foundry Licensing Tools \(FLT\) on the License Server](#).

Installing Foundry Licensing Tools (FLT) on the License Server

- Download FLT_7.1v1_mac-x86-release-64.dmg from our web site (www.thefoundry.co.uk/support/licensing/) and install it on the Mac that you want to serve the licenses across the network.

The license server starts automatically after installation (and whenever you restart the machine).

- To check the server status, navigate to **/Applications/TheFoundry/LicensingTools7.1**, double-click on **Foundry License Utility**, view the **FLEXlm Server** or **RLM Server** tab, and click **Refresh Log**.

To check RLM server status, you can also direct a web browser to the **http://<server_name>.local:4102** server page and click **Status** on the right.

Reprise License Server Administration
Copyright (c) 2006-2010, Reprise Software, Inc. All Rights Reserved.

Status for "rim" on kain (port 4101)

RLM software version	v6.0 (build 6)		
RLM comm version	v1.1		
debug log file	/usr/local/foundry/RLM/log/foundry.log		
license files	/usr/local/foundry/RLM/foundry_float_ukl_thefoundry_co_uk_1.lic /usr/local/foundry/RLM/follow.lic		

RLM Statistics	Since Start	Since Midnight	Recent
Start time	11/10 08:43:01	11/10 08:43:02	11/10 14:18:41
Messages	27 (0/sec)	27 (0/sec)	2 (0/sec)
Connections	21 (0/sec)	21 (0/sec)	1 (0/sec)

[EDIT rim Options](#)
[SHOW rim Debug Log](#)

ISV Servers										
Name	port	Running	Restarts	Server Status	License Usage	Debug Log	REREAD	OPTIONS	TRANSFER	SHUTDOWN
foundry	52246	Yes	1	foundry	foundry	foundry	foundry	foundry	foundry	foundry

- Proceed to [Telling the Client Machines Where to Find the Licenses](#).

Telling the Client Machines Where to Find the Licenses

When you installed the floating license key on your server, you were provided with a **<port>@<server name>**. You need this to license clients.

There are several ways to license clients. Choose one of the following and repeat it for each machine you wish to have access to licenses on the server:

- If your product displays a **Licensing** dialog when you launch it, click **Install License** and then **Use Server**. Type **<number>@<server name>** (for example, **4101@red**) and click **Install**. Your client retrieves a license from the License Server and launches.
- Navigate to **/Applications/TheFoundry/LicensingTools7.1/** and double-click on **FoundryLicenseUtility** to launch the FLU. Make sure you are viewing the **License Install** tab and copy and paste in an RLM server line:
HOST <server name> any <port>

For example: **HOST red any 4101**

This creates and installs both a FLEXlm and RLM client license.

- Launch a Terminal and navigate to:

```
/Applications/TheFoundry/LicensingTools7.1/
```

Then, type the following commands:

```
cd FoundryLicenseUtility.app/Contents/MacOS/  
./FoundryLicenseUtility -c <port>@<server name>
```

For example:

```
cd FoundryLicenseUtility.app/Contents/MacOS/  
./FoundryLicenseUtility -c 4101@red
```

This creates and installs both a FLEXlm and RLM client license.

- Set an environment variable on your client as follows:
 - If your product uses FLEXlm licensing, set the **FOUNDRY_LICENSE_FILE** environment variable on your client to point to the license server (for example, **@red**). If you have more than one server, you could use **@red:@green**.
If you have specified a particular server port number (30001) in the **foundry.lic** file on the server, you should set the environment variable to **30001@red**.
 - If your product uses RLM licensing, set the **foundry_LICENSE** environment variable on your client to point to the license server (for example, **4101@red**). If you have more than one server, you could use **4101@red:4101@green**.

If you are using a port other than 4101, replace 4101 with the port selected.

For more information on setting environment variables, see [Appendix C: FLT Variables](#).

- Although not recommended, you can manually create a client license.
 - If your product uses FLEXlm licensing, copy the **foundry.lic** file from the server to:
/Library/Application Support/TheFoundry/FLEXlm/
Rename the file and call it **foundry_client.lic**. Edit the file so it looks like this:
SERVER snowball 000a957bade9
VENDOR foundry
USE_SERVER
or if you had your own server port number set:
SERVER snowball 000a957bade9 30001

```
VENDOR foundry
USE_SERVER
```

- If your product uses RLM licensing, copy the **foundry.lic** file from the server to:

```
/Library/Application Support/TheFoundry/RLM/
```

Rename the file and call it **foundry_client.lic**. Edit the file so it looks like this:

```
HOST red 000a957bade9 4101
```

or if you had your own server port number set:

```
HOST red 000a957bade9 30001
```

Linux

This section tells you how to get your floating license working on Linux.

Installing a Floating License on the License Server

1. Once a license has been generated for you, we e-mail you a **.tgz** file containing the license key and instructions on how to obtain the correct version of the Foundry License Utility (FLU). On the machine that acts as the license server, gunzip or untar the file and save the FLU and your license key to a folder of your choice, for example **/tmp**. Note that the license file can be the original **.lic** file or the license in a plain **.txt** file (as long as the file has a **.lic** extension).

2. Navigate to the location of the **FLU_7.1v1_linux-x86-release-64.tgz** file.

3. Type the following commands to extract and install the FLU and the license. Note that you need to replace **[my license]** with the location of your license key.

```
tar xvzf FLU_7.1v1_linux-x86-release-64.tgz
```

```
cd FLU_7.1v1_linux-x86-release-64
```

```
./FoundryLicenseUtility -l [my license]
```

For example, if you saved your license key to **/tmp/Foundry.lic**, the last line should be:

```
./FoundryLicenseUtility -l /tmp/Foundry.lic
```

This checks the license key and copies it to the correct directory.

4. The license server address is displayed on screen:

```
<number>@<license server name>
```

You should make a note of the address as you'll need it to activate the client machines.

5. Proceed to [Installing Foundry Licensing Tools \(FLT\) on the License Server](#).



NOTE: If there is an error with any part of the license installation, this is reported on the command line. You should also see a **Generate Report** button, which you can click to write the errors out to a file and then visit supportportal.thefoundry.co.uk for assistance.

If you are installing several licenses at the same time and only some of them fail validation, you can continue to complete the installation of the valid licenses.

You may also get a message saying that the license is not yet valid but may be valid in the future. This means the license has been installed successfully and will automatically become live on the license start date. You do not need to do anything further, but if you like, you can check that the server is up and the server log reports the same message (see [Viewing the License Server Log](#)).

Alternatively, if you wish, you can install the license key by hand, though this is not recommended for most users. To do so:

1. Launch a text editor and create a plain text file. Avoid using Word or other word processing programs to create the file, as these add invisible control characters that trip up the licensing and make it hard for us to diagnose the fault.
2. Copy the license key and paste it into the plain text file.
3. Save the file with a **.lic** extension (not **.txt** or **.rtf**) in the following directory. The name of the file can be anything, but we recommend calling it **foundry.lic**.

FLEXlm licenses: **/usr/local/foundry/FLEXlm/**

RLM licenses: **/usr/local/foundry/RLM/**



NOTE: There are other directories that can be searched for license files. See [Moving the FLEXlm and RLM Files](#).

4. If you installed an RLM license, create an options file and set a **TIMEOUT** or **TIMEOUTALL** period. This ensures that licenses are returned to the server if the server and client machines lose contact with each other (due to a network error, a crash, or some other failure). For more information, see [Setting a TIMEOUT or TIMEOUTALL Period](#).

If you installed a FLEXlm license, you can skip this step. FLEXlm licenses have a default timeout period of 7200 seconds (two hours).

5. Proceed to [Installing Foundry Licensing Tools \(FLT\) on the License Server](#).

Installing Foundry Licensing Tools (FLT) on the License Server

1. Download **FLT_7.1v1_linux-x86-release-64.tgz** from our web site (www.thefoundry.co.uk/support/licensing/) on the Linux machine that you want to serve these licenses across the network and save it to **/tmp**.
2. Open a shell and, using root or admin permissions, type these commands to extract and install the Foundry Licensing Tools 7.1.

```
cd /tmp
```

```
tar xvzf FLT_7.1v1_linux-x86-release-64.tgz
```

```
cd FLT_7.1v1_linux-x86-release-64
./install.sh
```

The license server starts automatically after installation (and whenever you restart the machine).

- To check the server status, navigate to **/usr/local/foundry/LicensingTools7.1** and enter:

```
./FoundryLicenseUtility -s status
```

This reports the status of both FLEXlm and RLM servers. If you only want to view one or the other, use one of the following commands instead:

```
./FoundryLicenseUtility -s status -t FLEXlm
```

```
./FoundryLicenseUtility -s status -t RLM
```

To check RLM server status, you can also direct a web browser to the **http://<server_name>:4102** server page and click **Status** on the right.

Reprise License Server Administration
Copyright (c) 2006-2010, Reprise Software, Inc. All Rights Reserved.

Status for "rim" on kain (port 4101)

RLM software version	v8.0 (build 6)		
RLM comm version	v1.1		
debug log file	/usr/local/foundry/RLM/log/foundry.log		
license files	/usr/local/foundry/RLM/foundry_float_uk_1.lic /usr/local/foundry/RLM/falover.lic		

RLM Statistics	Since Start	Since Midnight	Recent
Start time	11/10 08:43:01	11/10 08:43:02	11/10 14:18:41
Messages	27 (0/sec)	27 (0/sec)	2 (0/sec)
Connections	21 (0/sec)	21 (0/sec)	1 (0/sec)

[EDIT rim Options](#)
[SHOW rim Debug Log](#)

ISV Servers										
Name	port	Running	Restarts	Server Status	License Usage	Debug Log	REREAD	OPTIONS	TRANSFER	SHUTDOWN
foundry	52246	Yes	1	foundry	foundry	foundry	foundry	foundry	foundry	foundry

- Proceed to [Telling the Client Machines Where to find the Licenses](#) below.

Telling the Client Machines Where to find the Licenses

When you installed the floating license key on your server, you were provided with a **<port>@<server name>**. You need this to license clients.

There are several ways to license clients. Choose one of the following and repeat it for each machine you wish to have access to licenses on the server:

- If your product displays a **Licensing** dialog when you launch it, click **Install License** and then **Use Server**. Type **<number>@<server name>** (for example, **4101@red**) into your The Foundry product and click **Install**. Your client retrieves a license from the License Server and launches.
- Launch a shell and navigate to:

```
/usr/local/foundry/LicensingTools7.1/
```

Then, type the following command:

```
./FoundryLicenseUtility -c <port>@<server name>
```

For example:

```
./FoundryLicenseUtility -c 4101@red
```

This creates and installs both a FLEXlm and RLM client license.

- Set an environment variable on your client as follows:

- If your product uses FLEXlm licensing, set the **FOUNDRY_LICENSE_FILE** environment variable on your client to point to the license server (for example, **@red**).

If you have more than one server, you could use **@red:@green**.

If you have specified a particular server port number (30001) in the **foundry.lic** file on the server, you should set the environment variable to **30001@red**.

- If your product uses RLM licensing, set the **foundry_LICENSE** environment variable on your client to point to the license server (for example, **4101@red**).

If you have more than one server, you could use **4101@red:4101@green**.

If you are using a port other than 4101, replace 4101 with the port selected.

For more information on setting environment variables, see [Appendix C: FLT Variables](#).

- Although not recommended, you can manually create a client license.

- If your product uses FLEXlm licensing, copy the **foundry.lic** file from the server to:

```
/usr/local/foundry/FLEXlm/
```

Rename the file and call it **foundry_client.lic**. Edit the file so it looks like this:

```
SERVER snowball 000a957bade9
```

```
VENDOR foundry
```

```
USE_SERVER
```

or if you had your own server port number set:

```
SERVER snowball 000a957bade9 30001
```

```
VENDOR foundry
```

```
USE_SERVER
```

- If your product uses RLM licensing, copy the **foundry.lic** file from the server to:

```
/usr/local/foundry/RLM/
```

Rename the file and call it **foundry_client.lic**. Edit the file so it looks like this:

```
HOST red 000a957bade9 4101
```

or if you had your own server port number set:

```
HOST red 000a957bade9 30001
```

License Administration

The following section contains details on license management and administration, including file location and updating licenses.

Where are the FLEXlm and RLM Files?

You can move the FLEXlm and RLM files anywhere, but by default they are installed to the following directories. We refer to this directory throughout this guide and assume all the FLEXlm and RLM components we ship are here.

Application Files

These are files included in the Foundry License Installer. We'll refer to this location as the <app path>.

<app path> on Windows:

```
C:\Program Files\The Foundry\LicensingTools7.1\bin\
```

<app path> on Mac OS X:

```
/Applications/TheFoundry/LicensingTools7.1/bin/
```

<app path> on Linux:

```
/usr/local/foundry/LicensingTools7.1/bin/
```

Data Files

These include the license keys and log files. We'll refer to these locations as the <data path>.

<data path> on Windows:

```
C:\ProgramData\The Foundry\FLEXlm\
```

```
C:\ProgramData\The Foundry\RLM\
```



NOTE: The ProgramData folder may be hidden. You can make it visible using the **Folder Options** in the **Control Panel**. See [Windows Hidden Files](#).

<data path> on Mac OS X:

```
/Library/Application Support/TheFoundry/FLEXlm/
```

```
/Library/Application Support/TheFoundry/RLM/
```

<data path> on Linux:

```
/usr/local/foundry/FLEXlm/
```

```
/usr/local/foundry/RLM/
```

Moving the FLEXlm and RLM Files

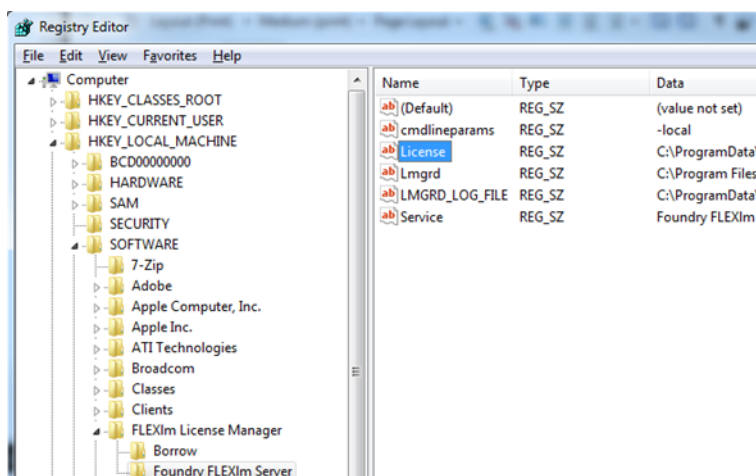
If you want to move a floating license key to another directory then, if you have a license server already running, you need to shut it down. You'll need to edit the startup scripts to look in the new location. Then restart the license

server.

On Windows

If your product uses FLEXlm licensing:

1. First, stop the license server if it's running. Navigate to **Start > Control Panel > Systems and Security > Administrative Tools > Services**. Select **Foundry FLEXlm Server** and click **Stop**.
2. Click **Start**, type **regedit**, and then press **Return** on your keyboard.
3. Open the hierarchical structure HKEY_LOCAL_MACHINE > SOFTWARE > FLEXlm License Manager > Foundry FLEXlm Server:



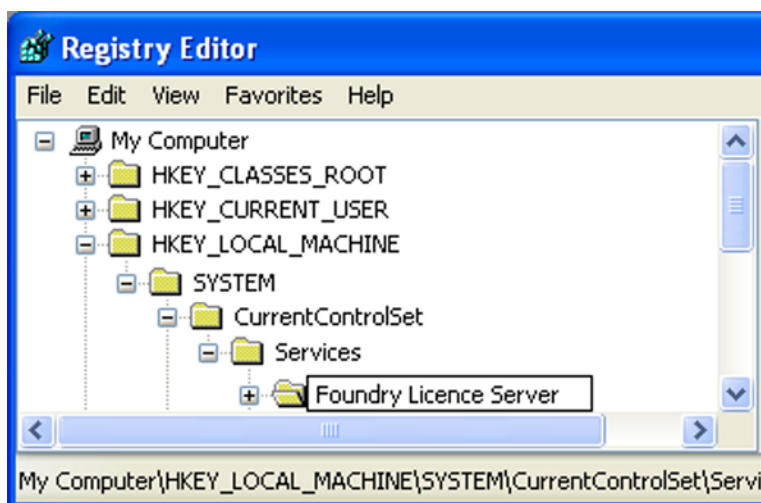
4. Select **License** and append the new license location to the current one using a ; (semicolon) between them:
C:\Program Files\The Foundry\FLEXlm;C:\tmp
5. Quit regedit.
6. Restart the license server. Navigate to **Start > Control Panel > Systems and Security > Administrative Tools > Services**. Select **Foundry FLEXlm Server** and click **Start**.



TIP: You can also stop and start the license server using the Foundry License Utility (FLU). See [Managing the License Server](#).

If your product uses RLM licensing:

1. First, stop the license server if it's running. Do one of the following:
 - Navigate to **Start > Control Panel > Systems and Security > Administrative Tools > Services**. Select **Foundry License Server** and click **Stop**.
 - Use a web browser to go to the **http://<server_name>:4102** server page. Click **Status > Stop**.
2. Click **Start**, type **regedit**, and then press **Return** on your keyboard.
3. Open the hierarchical structure HKEY_LOCAL_MACHINE > SYSTEM > CurrentControlSet > Services > Foundry License Server:



4. Move down the Registry as shown and select **ImagePath**.
5. Assuming your licenses are in **C:\tmp**, insert this into the path as shown:

```
"C:\Program Files\The Foundry\LicensingTools7.1\bin\rlm.foundry.exe" "-c"
"C:\ProgramData\The Foundry\RLM;C:\tmp" "-ws" "4102" "-dlog"
"C:\ProgramData\The Foundry\RLM\log\foundry.log" -service
```



NOTE: Semi colons are used to separate license directories on Windows.

6. Quit regedit.
7. Restart the license server by doing one of the following:
 - Navigate to **Start > Control Panel > Systems and Security > Administrative Tools > Services**. Select **Foundry License Server** and click **Start**.



TIP: You can also stop and start the license server using the Foundry License Utility (FLU). See [Managing the License Server](#).

On Mac OS X

- If your product uses FLEXlm licensing, edit:
 /Library/LaunchDaemons/uk.co.thefoundry.lmgrd
 changing this line:

```
<string>/Library/Application
Support/TheFoundry/FLEXlm/:/usr/local/foundry/FLEXlm/</string>
```

 to this, assuming your license is in /home/licenses

```
<string>/Library/Application
Support/TheFoundry/FLEXlm/:/usr/local/foundry/FLEXlm:/home/licenses</string>
```
- If your product uses RLM licensing, edit:
 /Library/LaunchDaemons/uk.co.thefoundry.rlm.plist

changing these lines:

```
<string>-c</string>
```

```
<string>/Library/Application Support/TheFoundry/RLM/</string>
```

to this, assuming your license is in /home/licenses:

```
string>-c</string>
```

```
<string>/Library/Application Support/TheFoundry/RLM:/home/licenses</string>
```

On Linux

- If your product uses FLEXlm licensing, edit:

```
/etc/init.d/foundryflexlmserver
```

changing this line:

```
FnLicDir=/usr/local/foundry/FLEXlm
```

to this, assuming your license is in /home/licenses

```
FnLicDir=/usr/local/foundry/FLEXlm:/home/licenses
```

- If your product uses RLM licensing, edit:

```
/etc/init.d/foundryrlmserver
```

changing this line:

```
FnLicDir=/usr/local/foundry/RLM
```

to this, assuming your license is in /home/licenses

```
FnLicDir=/usr/local/foundry/RLM:/home/licenses
```

When is a License Taken or Dropped?

Product licenses are checked out from the server when the product is first used on the client. Plug-in products generally take a license when the first plug-in of the set is used.

When a license is returned to the server depends on a number of things. Let's consider the following scenarios:

- [The Product Exits or is Deleted/Unloaded from the Client](#)
- [The Product Doesn't Exit but is not Used for a While](#)
- [The Server and Client Machine Lose Contact with Each Other](#)

The Product Exits or is Deleted/Unloaded from the Client

If the product exits or is deleted/unloaded from the client, the license is given back to the server.

Plug-in products generally return the license when the last plug-in of the set is removed from the effects tree or layer stack. The exact point at which a license is returned by a plug-in product is host-specific, and can be unpredictable.

The Product Doesn't Exit but is not Used for a While

If you take a license from the server and then go to lunch for an hour, your license will still be there when you get back.

If you want your license to go back to the server if you don't use it for a while, you need to change the default behavior by disabling the heartbeat.



NOTE: The heartbeat ensures the communication between the server and client persists in a stable fashion and therefore should be disabled with caution, otherwise users may find their licenses being withdrawn unexpectedly.

To disable the heartbeat:

1. Do one of the following:
 - If your product uses FLEXlm licensing, set the **FOUNDRY_HEARTBEAT_DISABLE** environment variable to **true** on the client.
 - If your product uses RLM licensing, set the **foundry_HEARTBEAT_DISABLE** environment variable to **true** on the client.

For more information on setting environment variables, see [Appendix C: FLT Variables](#).

2. Next, you **must** make sure a **TIMEOUT** or **TIMEOUTALL** value is set in the options file (foundry.opt). This value dictates how long the server should wait for communication to resume with the client before deciding that the client has exited. After the **TIMEOUT** period, the server deems the license released and makes it available on the network again. If no **TIMEOUT** period is set, however, the server may never release the license in some circumstances.

See [Setting a TIMEOUT or TIMEOUTALL Period](#).



NOTE: When installing RLM licenses using the Foundry License Utility (FLU), the FLU automatically creates the options file and sets the **TIMEOUTALL** value to 3600 seconds (one hour).

The Server and Client Machine Lose Contact with Each Other

Should the server and client machines lose contact with each other (due to a network error, a crash, or some other failure), licenses are returned to the server according to the **TIMEOUT** or **TIMEOUTALL** flag set in the options file (foundry.opt):

- FLEXlm licenses
 - By default, the **TIMEOUT** value is set to 7200, which means the server waits for 7200 seconds (two hours) before deciding that the client has crashed or failed in some other way, then deems the license released, and makes it available on the network again. If you want to change the default timeout period, you need to edit the options file. For instructions on how to do this, see [Setting a TIMEOUT or TIMEOUTALL Period](#).
- RLM licenses

- If you installed an RLM license using The Foundry License Utility (FLU), the options file was created automatically, with the TIMEOUTALL flag set to 3600 seconds (in other words, one hour). This means the server waits for one hour before deciding that the client has crashed or failed in some other way, then deems the license released, and makes it available on the network again. If you want to change the default timeout period, you need to edit the options file. For instructions on how to do this, see [Setting a TIMEOUT or TIMEOUTALL Period](#).
- If you installed an RLM license manually, you **must** create the options file and set a TIMEOUTALL or TIMEOUT period yourself. If you don't, the server does not have a default timeout period and may never release the license in some circumstances. For more instructions, see [Setting a TIMEOUT or TIMEOUTALL Period](#).

Setting a TIMEOUT or TIMEOUTALL Period

1. Create the options file if one doesn't already exist. It should be a plain text file called **foundry.opt** placed in the same directory as the license (unless a different options file location is specified in the license file itself, either on the VENDOR or ISV line).

2. In the options file, you can set the TIMEOUT on a per-product basis, for example:

```
TIMEOUT mari_i 3600
TIMEOUT katana_r 600
```

The lines above tell the server that if it has not had communication with a mari_i client for an hour, it should consider the license released. However, for the katana_r client, it should wait only 10 minutes before deciding the license is free to be served again.

You can also use:

```
TIMEOUTALL 3600
```

This tells the server that all features, except those with their own TIMEOUT flags, should time out after one hour.



NOTE: For RLM licenses, the options file TIMEOUT can only be set to a minimum of 3600 seconds (1 hour), unless your license contains a **min_timeout=<secs>** flag.

3. Once you have edited your options file, you need to stop and start the license server:
 - On Windows and Mac, launch the Foundry License Utility (FLU), go to one of the **Server** tabs and click **Stop Server**, followed by **Start Server**.
 - On Linux, launch a shell, navigate to where you saved the Foundry License Utility (FLU), and enter one of the following commands:

```
./FoundryLicenseUtility -s stop -t FLEXlm
./FoundryLicenseUtility -s stop -t RLM
```

Then, enter either:

```
./FoundryLicenseUtility -s start -t FLEXlm
./FoundryLicenseUtility -s start -t RLM
```



TIP: You can also use the FLU from a Terminal on Mac OS X or a command prompt on Windows.



TIP: To find out what the timeout period is set to, you can run the Foundry License Utility's Diagnostics tool (see [Using the Diagnostics Tool in GUI Mode](#)). This prints the contents of the options file if one is found.

Capping Licenses

Have you ever needed a license only to find they have all been checked out by your colleagues? Just needed a command to stop someone's license so you can grab it? Then these are the commands for you!

The **lmremove** (for FLEXlm) and **rlmremove** (for RLM) utilities allow you to remove a single user's license for a specified feature. As ever, let's consider some examples.

First, who's got the licenses?

- Using the **lmutil** command (FLEXlm licenses):

```
<app path>/lmutil lmstat -c <data path> -a
```

- Using the **rlmutil** command (RLM licenses):

```
<app path>/rlmutil rlmstat -c <data path> -a
```



NOTE: See [Application Files](#) and [Data Files](#) for the correct <app path> and <data path>.

The above FLEXlm command might produce this output:

```
Users of keylight_ofx_i: (Total of 1 licenses issued; Total of 1 license in use)
"keylight_ofx_i" v2.1, vendor: foundry
floating license
jack red /dev/tty001 (v2.1) (blue/30003 14094), start Tue 8/26 14:56
```

where the user is **jack**, the user's computer is **red**, the display is **/dev/tty001**, the server computer is **blue**, the TCP/IP port is **30003** and the license handle is **14094**.

Similarly, the RLM command might produce this output:

```
foundry license usage status on licserv (port 38565)
mari_i v2015.1231: jack@red 1/0 at 10/07 14:40 (handle: 8a)
mari_i v2015.1231: mike@green 1/0 at 10/07 14:41 (handle: 67)
```

where the user is **jack**, the user's computer is **red**, and the license handle is **8a**.

To remove Jack's license, use this command:

- FLEXlm:

```
<app path>lmutil lmremove keylight_ofx_i jack red dev/tts001
or
```

```
<app path>lmutil lmremove -h keylight_ofx_i blue 30003 14094
```

- RLM:

```
<app path>/rlmutil rlmremove licserv 38565 foundry 8a
```

Since it's a bit rude to cap someone's license, systems administrators can disable this functionality by:

- starting the **lmgrd** with a flag, **-x lmremove**.
- starting the **rlm.foundry** with a flag, **-x rlmremove**.

Appending to an Existing License

You can add a new license to an existing key using two methods:

- On Windows and Mac OS X, drop the license file onto the Foundry License Utility. On Linux, run the FLU from the command line using **./FoundryLicenseUtility -l [license path]**. This is the recommended method.
- Edit the license file manually from the command line. This is **not** recommended for most users.
If your product uses FLEXlm licensing, see [Manual Method \(FLEXlm\)](#).
If your product uses RLM licensing, see [Manual Method \(RLM\)](#).

Manual Method (FLEXlm)

You can add a new license key by editing the **foundry.lic** text file and then using **lmutil** to re-read this file.

Here is an example floating license key for a machine called red with System ID **000EA641D7A1** that serves 2 floating Nuke licenses onto the network.

```
SERVER red 000EA641D7A1
VENDOR foundry
INCREMENT nuke_i foundry 2012.0930 permanent 2 \
ISSUED=8-feb-2012 SIGN="00FF 6A1B 735B 0A10 6894 4903 E2CF \
A238 7A01 1A15 1808 7BCF 346C F59E 8899 F53C 2B13 E204"
```

If you are then sent a Furnace for Nuke license key for the same machine, just add the INCREMENT lines to your existing file, ignoring any SERVER lines, so that it would look like this:

```
SERVER red 000EA641D7A1
VENDOR foundry
INCREMENT nuke_i foundry 2012.0930 permanent 2 \
ISSUED=8-feb-2012 SIGN="00FF 6A1B 735B A476 6894 \
4903 E2CF A238 7A01 1A15 1808 7BCF 346C F59E 8899 \
F53C 2B13 E204"
INCREMENT nuke_r foundry 2012.0930 permanent 2 \
ISSUED=8-feb-2012 SIGN="0269 8747 2EA4 1D42 A5F5 \
56B9 7A26 6802 2A09 E931 F14B 09D5 B8E8 051E 606B \
07D5 64F3 7152"
INCREMENT furnace_ofx_i foundry 3.0 permanent 4
```

```
ISSUED=20-feb-2012 SIGN="0048 8492 6890 DC3F 23E8 \
4F29 83D7 9302 3F9E 79B1 54F8 D6EF 341D 5D09 C630 \
C75C 384C 1B89"
```

```
INCREMENT furnace_ofx_r foundry 3.0 permanent 4
ISSUED=20-feb-2012 SIGN="0309 431F 8D69 9499 340C \
0E25 366A 3900 5296 990B 079D 7F83 B5C8 C085 DD7A \
8437 9552 DE14"
```

Now re-read the license file with this command:

```
<app path>/lmutil lmreread -c <data path>
```

Manual Method (RLM)

You can add a new license key by editing the **foundry.lic** text file and then using **rlmutil** to re-read this file.

Here is an example floating license key for a machine called red with System ID **000EA641D7A1** that serves 2 floating Mari licenses onto the network:

```
HOST red 000EA641D7A1 4101
ISV foundry
LICENSE foundry mari_i 2010.1231 permanent 2 share=h start=6-oct-2010 issued=6-oct-2010
_ck=fad7306732
sig="60Q04580SBD4AEEY4C93A1K0H718JRY9DWGP1HWR08AG1CY16HPHCKKQ44FDKGYQKE0BXKGRJ3WBT"
```

If you are then sent an Ocula license key for the same machine, just add the LICENSE lines to your existing file, ignoring any HOST or ISV lines, so that it would look like this:

```
HOST red 000EA641D7A1 4101
ISV foundry
LICENSE foundry mari_i 2010.1231 permanent 2 share=h start=6-oct-2010 issued=6-oct-2010
_ck=fad7306732
sig="60Q04580SBD4AEEY4C93A1K0H718JRY9DWGP1HWR08AG1CY16HPHCKKQ44FDKGYQKE0BXKGRJ3WBT"
LICENSE foundry ocula_nuke_i 3.0 permanent 2 share=h start=6-oct-2010 issued=6-oct-2010
_ck=72d73079d7
sig="60PG4512DMXC338XEG3F0XBNPFREB6SHHD0QXA822M09MNJUB3E9VQUXKJP69DJ5CYR27AUYFRS0"
```

Now re-read the license file with this command:

```
<app path>/rlmutil rlmreread -c <data path>
```

OR

Using a web browser, go to **http://red:4102** and click **Status > Reread**.

The <server_name> Variable

If you requested a floating license key but didn't tell us the hostname of your license server, then we will have given you a license key with **<server_name>** in the first line. You need to replace the text **<server_name>** with the name of your license server (if you use the Foundry License Utility, it does this for you).

Replace Licenses

You may see the word **SUPERSEDE** in your FLEXlm license file or **replace** in your RLM license file. These flags are used in conjunction with the **ISSUED** (FLEXlm) and **issued** (RLM) flags to roll together multiple licenses.

For example, let's consider this FLEXlm license for Nuke:

```
SERVER red 2c4138a7d9ba
VENDOR foundry
INCREMENT nuke_i foundry 2013.1231 31-jan-2014 2 SUPERSEDE \
ISSUED=29-feb-2012 START=29-feb-2012 TS_OK SIGN="001E AA6A \
8780 5A12 7811 15B9 F441 8F7F 186D 2B74 3303 B6AD 2072 079C \
440D 7F36 F09C 1A2B FF4A 274F 6C67"
```

Here, the **SUPERSEDE** flag forces FLEXlm to ignore any nuke_i licenses with an **ISSUED** date older than 29th February 2012.

Similarly, in the following RLM license for Mari, the **replace** flag forces RLM to ignore any mari_i licenses with an **issued** date older than 1st December 2013.

```
HOST red 2c4138a7d9ba 4101
ISV foundry
LICENSE foundry mari_i 2013.1231 permanent 2 share=h min_timeout=30
start=1-dec-2013 issued=1-dec-2013 replace
_ck=07d7a84d33
```

```
sig="60PG4580SR8RRKV7XM5E8J1XPV0BEV00PSASH0UV08A4MHS
EMWMKW520H34RNCGKM0XUVT229BT0"
```

Which RLM Port?

Although the default port used by RLM is 5053, The Foundry has opted to use port 4101 for all its licenses to ensure there are no conflicts with any other RLM license servers that may be running on the server.

If, however, no port is specified on the HOST line of a license, or in the foundry_LICENSE environment variable, the port defaults to 5053. For example, the following entry:

```
HOST red 000EA641D7A1
```

behaves in the same way as:

```
HOST red 000EA641D7A1 5053
```

Licenses sent to you by The Foundry appear as follows:

```
HOST red 000EA641D7A1 4101
```

If you wish to change this port number, ensure that you modify all your client licenses in the same way.

Managing the License Server

Starting the License Server

The License Server starts automatically when you reboot your machine, but you can start it manually:

- On Windows and Mac OS X, launch the Foundry License Utility (FLU), go to the **FLEXlm Server** or **RLM Server** tab, and click **Start Server**.



TIP: You can also use the FLU from a command prompt on Windows or a Terminal on Mac OS X.

- On Linux, launch a shell, navigate to where you saved the Foundry License Utility (FLU), and enter one of the following commands:


```
./FoundryLicenseUtility -s start -t FLEXlm
./FoundryLicenseUtility -s start -t RLM
```
- On all platforms, if your product uses RLM licensing, you can also use a web browser to navigate to the **http://<server_name>:4102** server page. For example, **http://red:4102**. Click the **Status** button, and click **Start** on the Foundry License Server.



NOTE: On Mac OS X, if you're browsing from the License Server itself, you must add **.local** in the browser address: **http://<server_name>.local:4102**.

Stopping the License Server

To stop the license server:

- On Windows and Mac OS X, launch the Foundry License Utility (FLU), go to the **FLEXlm Server** or **RLM Server** tab, and click **Stop Server**.



TIP: You can also use the FLU from a command prompt on Windows or a Terminal on Mac OS X.

- On Linux, launch a shell, navigate to where you saved the Foundry License Utility (FLU), and enter one of the following commands:

```
./FoundryLicenseUtility -s stop -t FLEXlm
```

```
./FoundryLicenseUtility -s stop -t RLM
```

- On all platforms, if your product uses RLM licensing, you can also use a web browser to navigate to the **http://<server_name>:4102** server page and click **Stop**.



NOTE: On Mac OS X, if you're browsing from the License Server itself, you must add **.local** in the browser address: **http://<server_name>.local:4102**.

Viewing the License Server Log

You can view the license server log even if you don't have administrator privileges. To do so:

- On Windows and Mac OS X, launch the Foundry License Utility (FLU), go to the **FLEXlm Server** or **RLM Server** tab, and click **Refresh Log**.



TIP: You can also use the FLU from a command prompt on Windows or a Terminal on Mac OS X.

- On Linux, launch a shell, navigate to where you saved the Foundry License Utility (FLU), and enter:

```
./FoundryLicenseUtility -s status
```

This reports the status of both FLEXlm and RLM servers. If you only want to view one or the other, use one of the following commands instead:

```
./FoundryLicenseUtility -s status -t FLEXlm
```

```
./FoundryLicenseUtility -s status -t RLM
```

- On all platforms, if your product uses RLM licensing, you can also use a web browser to navigate to the **http://<server_name>:4102** server page and click the **Status** button.



NOTE: On Mac OS X, if you're browsing from the License Server itself, you must add **.local** in the browser address: **http://<server_name>.local:4102**.

RLM Web Server

The RLM web server also allows you to:

- retrieve server and license status (similar to **rlmstat**)
- cause the servers to re-read the license files (**rlmreread**)
- switch debug (**rlmswitch**) or report log (**rlmswitchr**) files
- move the current report log file to a new name (**rlmnewlog**)
- shutdown and startup the license servers (**rlmdown/rlmreread**).

Using this web-based interface, you can administer the license server from any platform, and you do not need to install the RLM utilities - you only need a web browser.

- **Main Status** - if you select **Status** from the menu on the left, the main status screen is displayed in the view area as shown below.

Reprise License Server Administration
Copyright (c) 2006-2010, Reprise Software, Inc. All Rights Reserved.

RLM Administration Commands

Choose a command from the list below

- Status**
- Shutdown
- Reread/Restart Servers
- Switch Reporting
- New Reporting
- Switch Debuglog
- Manage Windows Service
- Activate License
- Diagnostics
- RLM Manual...
- System Info
- About...

Status for "rlm" on kain (port 4101)

RLM software version	v6.0 (build 6)
RLM comm version	v1.1
debug log file	/usr/local/foundry/RLM/log/foundry.log
license files	/usr/local/foundry/RLM/foundry_float_uk_1.lic /usr/local/foundry/RLM/falover.lic

rlm Statistics	Since Start	Since Midnight	Recent
Start time	11/10 08:43:01	11/10 08:43:02	11/10 14:18:41
Messages	27 (0/sec)	27 (0/sec)	2 (0/sec)
Connections	21 (0/sec)	21 (0/sec)	1 (0/sec)

[EDIT rlm Options](#)
[SHOW rlm Debug Log](#)

ISV Servers										
Name	port	Running	Restarts	Server Status	License Usage	Debug Log	REREAD	OPTIONS	TRANSFER	SHUTDOWN
foundry	52246	Yes	1	foundry	foundry	foundry	foundry	foundry	foundry	foundry

- **Server Status** - click on an ISV button in the **Server Status** column to display a detailed status display for an individual ISV server in the view area. This displays some server statistics in a table at the top, followed by a table of all the licenses served by this ISV server.

Reprise License Server Administration
Copyright (c) 2006-2010, Reprise Software, Inc. All Rights Reserved.

ISV foundry status on kain (port 40713)

foundry software version	v6.0 (build 6)
foundry comm version	v1.1
debug log file	_stdout_
report log file	_nil_

foundry Statistics	Since Start	Since Midnight	Recent
Start Time	10/09 16:43:12	10/11 00:00:32	10/11 11:11:34
Messages	85 (0/sec)	83 (0/sec)	5 (0/sec)
Connections	17 (0/sec)	16 (0/sec)	2 (0/sec)
Checkouts	13 (0/sec)	13 (0/sec)	0 (0/sec)
Denials	0 (0/sec)	0 (0/sec)	0 (0/sec)
License Removals	0 (0/sec)	0 (0/sec)	0 (0/sec)

License pool status

Product	Pool	Ver	Expires	count	soft lim	inuse	res	timeout	share	transactions	Show License Usage
licensegenerator	1	6.0	permanent	20	20	0	0	0	Host	0	usage...

- **License Status** - if you click on the **usage...** button in the **Show License Usage** column above, you see the license status screen, as shown.

Reprise License Server Administration
Copyright (c) 2006-2010, Reprise Software, Inc. All Rights Reserved.

License status for ISV foundry

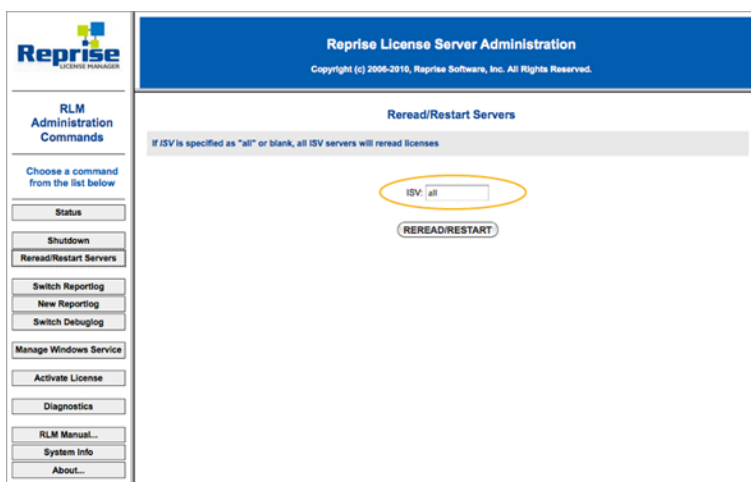
Product	Pool	Ver	user	host	PID	req ver	# lic	# res	Out time	Click to REMOVE
mat_l	2	2015.1231	itshener	rimmer	2312	2010.1008	1	0	10/11 11:37	Remove

[Refresh](#)

[Back](#)

- **Reread/Restart/Shutdown** - click **Reread/Restart Servers** from the menu on the left (or from the **REREAD** column in the ISV server status display) to display the **Reread/Restart Servers** screen in the view area. Enter an ISV name and click **REREAD/RESTART**. This restarts the server if it is not running, or sends it a reread command if it is running.

You can also type **all** to refresh or restart all discovered servers.



Useful Commands for System Administrators

Type all these commands from the The Foundry FLEXlm or RLM applications directory on the server.

See [Application Files](#) for a description of the <app path> variable, and [Data Files](#) for a description of <data path>.

Is the License Server Up and Running?

```
<app path>/lmutil lmstat -c <data path>
<app path>/rlmutil rlmstat -c <data path>
```

I'm Using The Foundry Software on Machine "blue". Which Licenses is the License Server "red" Offering?

```
<app path>/lmutil lmstat -c <port>@red -a
<app path>/rlmutil rlmstat -c <port>@red -a
```

What is My System ID Number?

```
<app path>/lmutil lmhostid
<app path>/rlmutil rlmhostid
```

What's My <server_name>?

```
<app path>/lmutil lmhostid -hostname
<app path>/rlmutil rlmhostid host
```

Show Me All My Licenses and Who has Checked Them Out.

```
<app path>/lmutil lmstat -c <data path> -a
<app path>/rlmutil rlmstat -c <data path> -a
```

OR

If your product uses RLM licensing, you can also use a web browser to go to `http://<server name>:4102` and click **Status > Server Status** to view license usage.



NOTE: On Mac OS X, if you're browsing from the License Server itself, you must add **.local** in the browser address: `http://<server_name>.local:4102`.

Who Has Checked Out a Particular License?

```
<app path>/lmutil lmstat -c <data path> -f furnace_ofx_r
<app path>/rlmutil rlmstat -c <data path> -p mari_r
```

I've been given a new floating license key, which I've edited into my license file, but it has not been picked up by the server. What do I do?

- On Windows and Mac OS X, launch the Foundry License Utility, go to one of the **Server** tabs, and use the **Reread Server** button.
- Alternatively, use one of the following commands:

```
<app path>/lmutil lmreread -c <data path>
<app path>/rlmutil rlmreread -c <data path>
```
- If your product uses RLM licensing, you can also use a web browser to go to `http://<server name>:4102` and click **Reread/Restart Servers**. Enter the server name you want to reread and click **Reread/Restart**.



NOTE: On Mac OS X, If you're browsing from the License Server itself, you must add **.local** in the browser address: `http://<server_name>.local:4102`.

My Default Debug Log File (foundry.log) is Too Big. How do I Start a New One Called october.log Without Interrupting the lmgrd or rlm.foundry Daemon?

```
<app path>/lmutil lmswitch -c <data path> foundry october.log
<app path>/rlmutil rlmswitch foundry october.log
```

Removing FLT

On Windows

To stop the Foundry License Server and remove FLT from your machine, from the **Start** menu go to **All Programs > The Foundry > FLT 7.1v1 > Uninstall FLT 7.1v1**.

On Mac OS X

To stop the Foundry License Server and remove FLT from your machine, run the **FLT Uninstaller** script from a terminal with root or sudo permissions:

```
/Applications/TheFoundry/LicensingTools7.1/uninstall.sh
```

On Linux

To stop the Foundry License Server and remove FLT from your machine, run the script:

```
/usr/local/foundry/LicensingTools7.1/uninstall.sh
```

More Information

This user guide should cover all the information you need to use FLEXlm or RLM licenses for The Foundry products. However, it is not meant to be an exhaustive exploration of all the features available with FLEXlm or RLM licensing. For that, you should:

- see the FLEXnet Licensing End User Guide included in the Foundry Licensing Tools download or go to www.flexerasoftware.com.
- see the RLM Licensing End User Guide included in the Foundry Licensing Tools download or go to www.reprisesoftware.com.

Please be aware that advanced RLM features not discussed in this user guide are not supported with RLM licenses from The Foundry.

Troubleshooting Licenses

There are many reasons why your license key may fail to work. This section is here to guide you through some common problems and how to fix them.



NOTE: The Foundry Licensing Tools' default settings do not support RLM licensing on virtual machines (VMs). If you have any questions regarding licensing on VMs, please visit supportportal.thefoundry.co.uk for assistance.

Firewalls

The Problem

You have set up a floating license, but client machines are not able to get a license from the server. Everything seems to be set up correctly. The server is running and is floating licenses. The client is correctly pointing to the server using a **client.lic** file or an environment variable. So what's wrong?

The Solution

This could be any number of things, but if everything is set up correctly, it could be the firewall on the server blocking perfectly legitimate requests from the client. In order to fix this, you need to specify ports for your servers and allow these to be open.

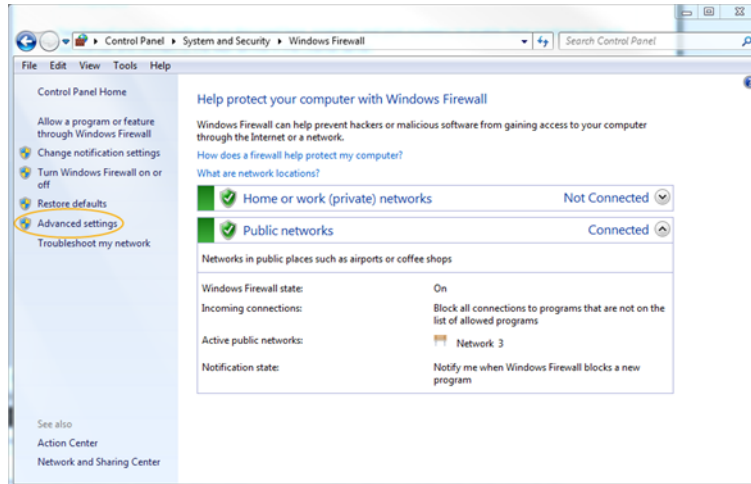
- If you're on Windows, see [Windows](#).
- If you're on Mac OS X, see [Mac OS X](#).
- If you're on Linux, consult your system administrator.

Windows

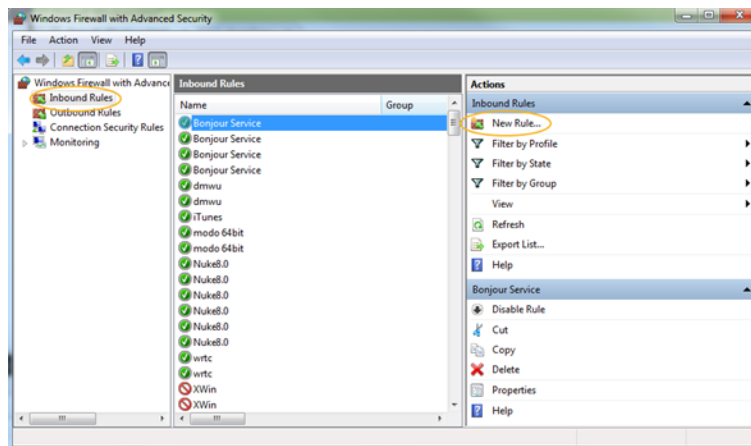
Two firewall exception methods are available to enable client machines to checkout licenses and connect to the web service in the License Server: programs and port numbers.

Windows Program Exceptions

1. From the Windows **Start** menu, click **Control Panel > System and Security > Windows Firewall** and then click on the **Advanced settings** link.

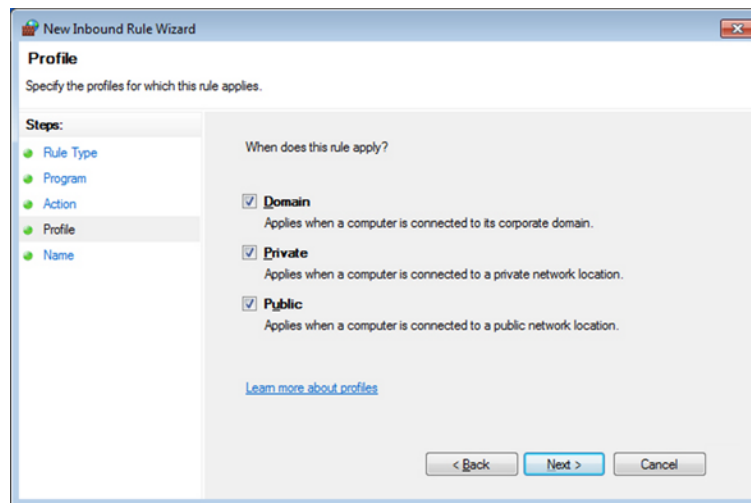


2. Select **Inbound Rules** in the left-hand panel and click **New Rule** as shown below.



3. Select **Program** and then click **Next**.
4. Select **This program path** and then browse to the location of the following programs, dependent on the license server you're using:
 - If your product uses FLEXlm licensing, browse to:
C:\Program Files\The Foundry\LicensingTools7.1\bin\FLEXlm
Add **lmgrd.foundry.exe** and then repeat the process to add an input exception for **foundry.exe**.
 - If your product uses RLM licensing, browse to:
C:\Program Files\The Foundry\LicensingTools7.1\bin\RLM
Add **rlm.foundry.exe**.
5. Click **Allow the connection** and then click **Next**.

6. Select all the checkboxes that apply to the rule. **Domain**, **Private**, and **Public** in the example below.



7. Click **Next** and enter a meaningful name for the rule, such as FLEX_SERVER or RLM_HOST.
 8. Click **Finish** to complete the process.
 9. Stop and Start the license server as described in [Managing the License Server](#).

Windows Port Exceptions

Port exceptions are set up slightly differently depending on whether you're using a FLEXlm or RLM license server.

FLEXlm Port Exceptions

First, you need to change the license files on the server and any clients to include port numbers. See [Where are the FLEXlm and RLM Files?](#) for the license file locations. These port numbers must be different. For example, you might edit a FLEXlm license to look like this:

```
SERVER red 000EA641D7A1 30001
VENDOR foundry PORT=1001
```

And a client license like this:

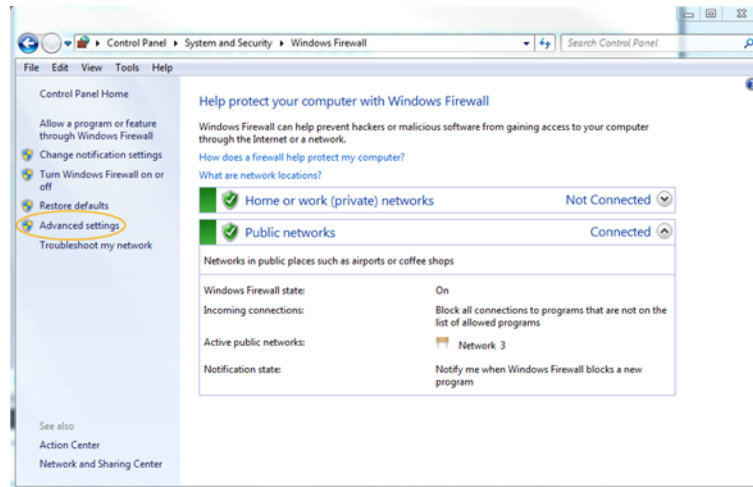
```
SERVER red ANY 30001
VENDOR foundry PORT=1001
USE_SERVER
```



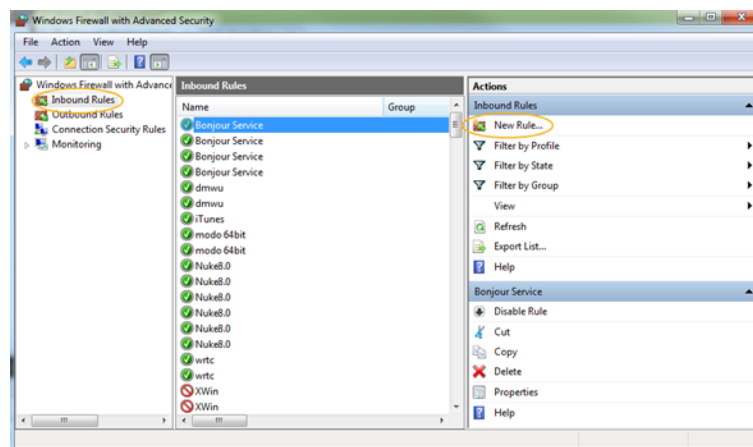
NOTE: You may want to check with your system administrator that the port number you choose is not already in use by another program.

Next, on the license server, go to your firewall settings and add Inbound Rules for TCP ports with the port numbers in the SERVER and VENDOR lines.

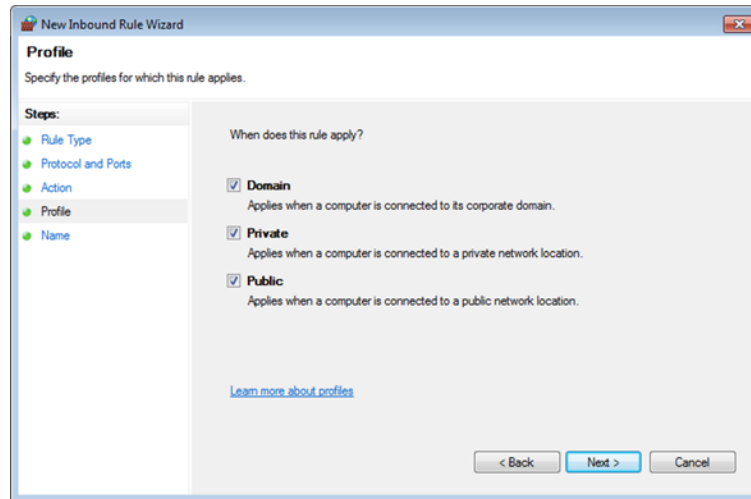
1. From the Windows **Start** menu, click **Control Panel > System and Security > Windows Firewall** and then click on the **Advanced settings** link.



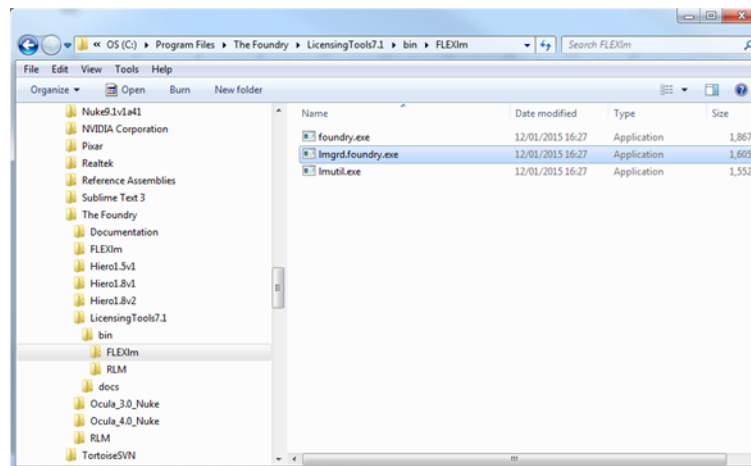
2. Select **Inbound Rules** in the left-hand panel and click **New Rule** as shown below.



3. Select the **Port** radio button and then click **Next**.
4. Select **TCP** and **Specific local ports** and enter the port number in the field provided, 30001 in the example.
5. Click **Next**.
6. Select **Allow the connection** and click **Next**.
7. Select when the new rule should be applied using the checkboxes. In the example, the rule is applied at all times, but you can modify this as required.



8. Click **Next** and enter a meaningful name for the new rule, for example FLEXlm_SERVER, and write a description, if required.
9. Click **Finish**.
10. Select the new rule from the **Inbound Rules** list and click **Properties**.
11. Click the **Programs and Services** tab, select **This program**, and browse to <app path>/lmgrd.foundry.exe as shown.



12. Click **Open** to return to the **Properties** dialog.
13. Click **Apply**, and close the dialog.
14. Repeat steps 2 through 14 for the VENDOR port, replacing the port number, and the program with <app path>/foundry.exe.
15. Stop and start the license server as described in [Managing the License Server](#).

RLM Port Exceptions

As with FLEXlm, you need to change your license file to include two different port numbers. Unlike FLEXlm, RLM also requires an options file entry.

If you installed an RLM license using the FLU, the options file was created automatically in the same directory as your license. If, however, you installed your license manually, create a plain text file called **foundry.opt** in the same directory as the license. See [Where are the FLEXlm and RLM Files?](#) for the license file location.

A typical RLM licence including port numbers and an options file might look like this:

```
HOST red 000ea641d7a1 4101
```

```
ISV foundry OPTIONS=foundry.opt PORT=12345
```



NOTE: You may want to check with your system administrator that the port number you choose is not already in use by another program.

A **foundry.opt** file for Mari should contain the following line:

```
TIMEOUT mari_i 3600
```

Or, for all RLM licensed products:

```
TIMEOUTALL 3600
```

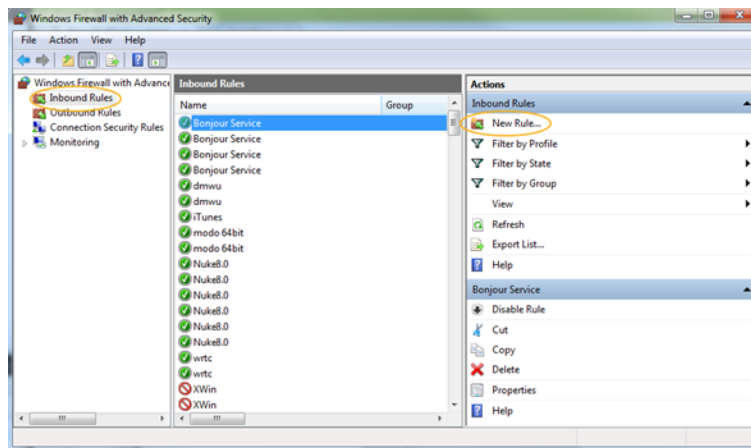
After editing the license and options file, stop and start the license server as described in [Managing the License Server](#). In the license server interface, click **Status** and check that the ports specified are listed and that the server is running.

Name	port	Running	Restarts	Server Status	License Usage	Debug Log	REREAD	OPTIONS	TRANSFER	SHUTDOWN
foundry	12345	Yes	0	foundry	foundry	foundry	foundry	foundry	foundry	foundry

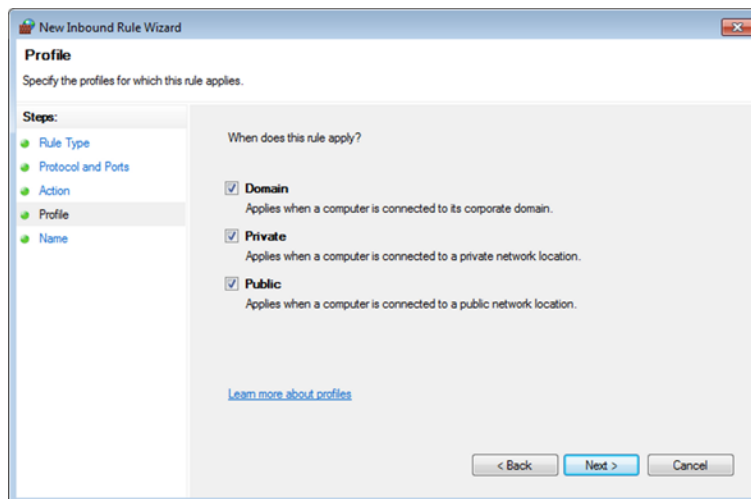
Next, go to your firewall settings and add **Inbound Rules** for TCP ports with the port numbers in the HOST and ISV lines.

1. From the Windows **Start** menu, click **Control Panel > System and Security > Windows Firewall** and then click on the **Advanced settings** link.

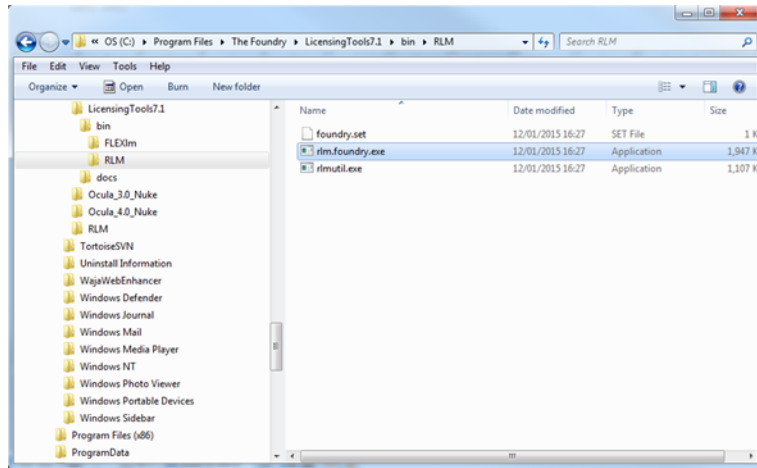
2. Select **Inbound Rules** in the left-hand panel and click **New Rule** as shown below.



3. Select the **Port** radio button and then click **Next**.
4. Select **TCP** and **Specific local ports** and enter the port number in the field provided (4101 in the example).
5. Click **Next**.
6. Select **Allow the connection** and click **Next**.
7. Select when the new rule should be applied using the checkboxes. In the example, the rule is applied at all times, but you can modify this as required.



8. Click **Next**.
9. Enter a meaningful name for the new rule, for example RLM_HOST, and write a description, if required.
10. Click **Finish**.
11. Select the new rule from the **Inbound Rules** list and click **Properties**.
12. Click the **Programs and Services** tab, select **This program**, and browse to <app path>/**rlm.foundry.exe** as shown.



13. Click **Open** to return to the **Properties** dialog.
14. Click **Apply**, and close the dialog.
15. Repeat the process for the ISV port, replacing the port number and rule name.
16. Click the **Programs and Services** tab, select **All programs that meet the specified conditions**.
17. Click **OK** to close the dialog.

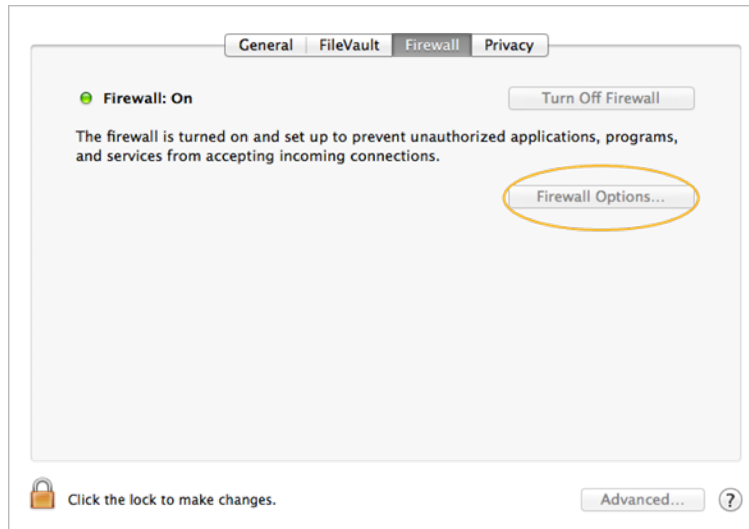
Mac OS X

You need to adjust your firewall settings. How to do this depends on your firewall and the version of Mac OS X you are running, but here's how to do it on Mac OS X 10.6 (Snow Leopard):

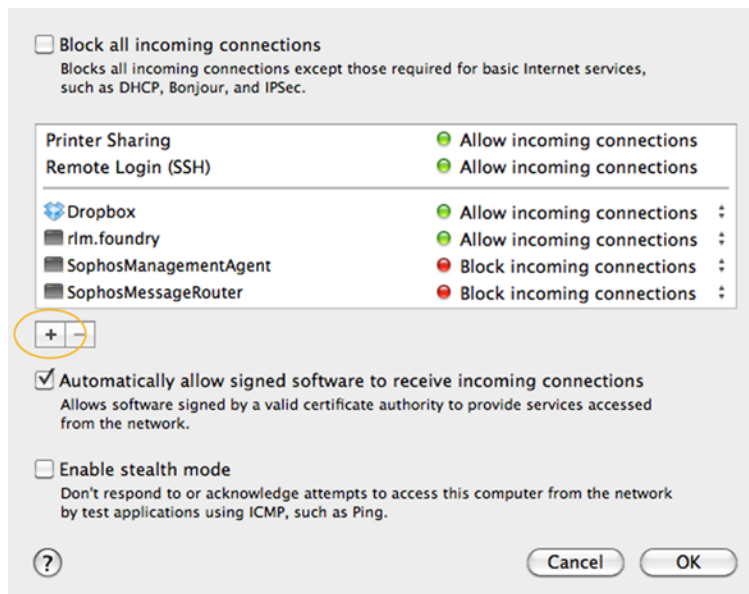
1. Launch **System Preferences**.
2. Click on **Security & Privacy** and go to the **Firewall** tab.
3. Click the **Firewall Options** button.



NOTE: You may need to click the lock icon at the bottom-left to enable changes.



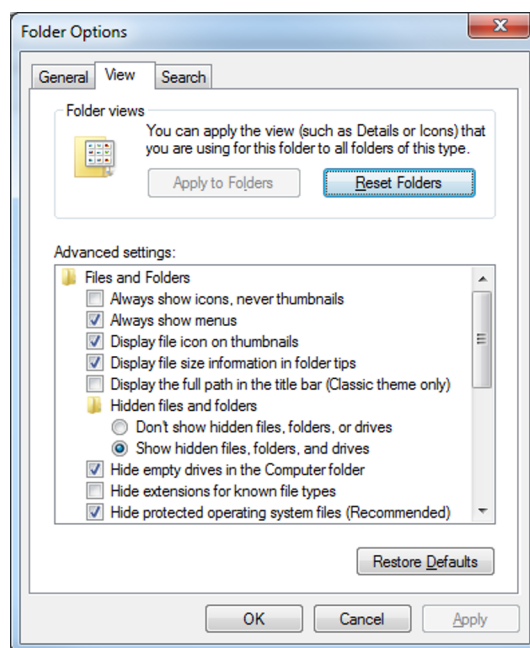
4. Under the list of incoming connections, click on the + button.



5. If your product uses FLEXlm licensing:
 - Navigate to **/Applications/TheFoundry/LicensingTools7.1/bin/FLEXlm**
 - Select both **foundry** and **lmgrd.foundry** and click **Add**.
- If your product uses RLM licensing:
 - Navigate to **/Applications/TheFoundry/LicensingTools7.1/bin/RLM**
 - Select **rlm.foundry** and click **Add**.

Windows Hidden Files

On Windows, the **C:\ProgramData** directory may be hidden. You can make it visible by navigating to **Control Panel > Appearance and Personalization > Folder Options > View** tab and then selecting **Show hidden files, folders, and drives**.



Enable **Show hidden files, folders, and drives**.

FLU Reporting More Than One System ID

For most machines the FLEXlm System ID and RLM System ID are the same, so the FLU displays a single System ID. However, on rare occasions, two System IDs are reported (one for FLEXlm and one for RLM). If this is the case, both System IDs are displayed, like this:

R00ffb79aefc9:X00ffb79aefa9

If the FLU returns two System IDs for your machine, the one that you need to use depends on which software you are running:

- For FLEXlm licensed software you need to use the second System ID minus the **X**, 00ffb79aefa9 in the example.
- For RLM licensed software you need to use the first System ID minus the **R**, 00ffb79aefc9 in the example.

For a full list of The Foundry products and which licensing software they use, go to the Licensing FAQ [here](#), and open **What are RLM and FLEXlm licenses?**

Node Locked and Client Licenses

If you have a node locked license in a client license file that is pointing to the server for its licenses, the node locked license won't work. Use separate files for the node locked license (foundry.lic) and client license (foundry_client.lic). For example, this Mari RLM license won't work in this file that is looking on "red" for its licenses.

```
HOST red 000EA641D7A1 4101
ISV foundry
LICENSE foundry mari_i 2011.1006 permanent uncounted hostid=000ea641d7a1 share=h
start=6-oct-2010 issued=6-oct-2010 _ck=fbf430af8c
sig="60PG4515BFTJCYAXSYJ6GTUJ3B9NRRGF3VUUKD022M0BXU48SSESUGSAFJ8BAD5BN883526ETKQ0"
```

Accessing the RLM Web Server on Mac OS X

The Problem

On Mac OS X, you're browsing to `http://<server_name>:4102`, on the License Server itself, looking for the RLM Web Server page, but you can't connect.

The Solution

Due to Mac OS X system architecture, you must add **.local** to the URL address when you're browsing from the License Server itself:

`http://<server_name>.local:4102`



NOTE: You can use this address on other platforms, but it's not necessary.

Contacting Support

If you have flicked through this user guide and haven't found the answer to your question, then please:

1. See the frequently asked questions at www.thefoundry.co.uk/support/faqs/.
2. Run the Foundry License Utility's diagnostics tool in GUI mode (Windows and Mac) or from the command line (Windows, Mac, and Linux). This gives you a text file that you can send to support for assistance. See [Using the Diagnostics Tool in GUI Mode](#) or [Using the Diagnostics Tool in Command Line Mode](#).
3. Visit supportportal.thefoundry.co.uk for assistance.

Using the Diagnostics Tool in GUI Mode

1. Launch the Foundry License Utility (FLU).
2. Go to the **Diagnostics** tab, and click **Run Diagnostics**.
This gathers lots of information on your machine that helps us diagnose the problem. No personal information is gathered.
3. Click **Save** to write out a text file we can use to assist you when you visit supportportal.thefoundry.co.uk.

Using the Diagnostics Tool in Command Line Mode

1. Launch a command prompt (Windows), a Terminal (Mac), or a shell (Linux).
2. Navigate to the directory where you have saved the Foundry License Utility (FLU).
3. Enter one of the following commands.

Windows

```
FLU_7.1v1_win-x86-release-64.exe -d
```

Mac OS X

```
./FoundryLicenseUtility.app/Contents/MacOS/FoundryLicenseUtility -d
```

Linux

```
./FoundryLicenseUtility -d
```

This gathers lots of information on your machine that helps us diagnose the problem. No personal information is gathered.

4. The tool prompts you to save a text file we can use to assist you when you visit supportportal.thefoundry.co.uk. To do so, enter **Y**.



TIP: By default, the file is saved to your home directory and given an automated file name. If you'd like to specify a different directory and name, use **-f <path>** instead. For example, on Windows:

```
FLU_7.1v1_win-x86-release-64.exe -f C:\temp\log.txt
```

Appendix A: Release Notes

This section describes the requirements, new features, improvements, fixed bugs, and known bugs and workarounds for each release of the Foundry Licensing Tools (FLT).

FLT 7.1v1

This is a major new release of FLT, with new features, enhancements, and bug fixes.

Release Date

March 2015

System Requirements

- Mac OS X 10.6 (Snow Leopard), 10.7 (Lion), or 10.8 (Mountain Lion), 64-bit only
- Linux RHEL 5.4 or RHEL 6, 64-bit
- Windows 7 or Windows 8, 64-bit



NOTE: These are the operating systems FLT has been tested on. Other operating systems are likely to work.

New Features

- The FLU and FLT are now only supported on 64-bit machines.
- The FLU now checks more licensing directories when you click **Run Diagnostics**.

Feature Enhancements

A new command line flag, **--name** or **-n**, has been added to the FLU to show the local machine name.

Fixed Bugs

- Mac OS X: The default file descriptor limit has been increased to 10240 in the **foundrylmservice** start up script.

- BUG ID 47116 - Windows 7 only: The default license and log file paths were incorrect.

Known Issues and Workarounds

There are no known issues in this release.

FLT 7.0v5

This is a maintenance release of FLT.

Release Date

October 2013

System Requirements

- Mac OS X 10.6 (Snow Leopard), 10.7 (Lion), or 10.8 (Mountain Lion), 64-bit only
- Linux RHEL 5.4 or RHEL 6, 32-bit or 64-bit
- Windows XP, Windows 7, or Windows 8, 32-bit or 64-bit



NOTE: These are the operating systems FLT has been tested on. Other operating systems are likely to work.

New Features

There are no new features in this release.

Feature Enhancements

There are no feature enhancements in this release.

Fixed Bugs

- On rare occasions, the Foundry License Utility (FLU) reported the System ID as "np".
- BUG ID 36568 - The Foundry License Utility (FLU) did not run correctly on Mac OS X 10.9 (Mavericks).

Known Issues and Workarounds

There are no known issues in this release.

FLT 7.0v4

This is a maintenance release of FLT.

Release Date

April 2013

System Requirements

- Mac OS X 10.6 (Snow Leopard) and 10.7 (Lion), 64-bit only
- Linux RHEL 5.4, 32-bit or 64-bit
- Windows XP or Windows 7, 32-bit or 64-bit



NOTE: Other operating systems are likely to work.

New Features

There are no new features in this release.

Feature Enhancements

There are no feature enhancements in this release.

Fixed Bugs

BUG ID 35235 - The Foundry License Utility (FLU) was reporting the port number incorrectly for FLEXlm floating license installations.

Known Issues and Workarounds

There are no known issues in this release.

FLT 7.0v3

This is a maintenance release of FLT.

Release Date

April 2013

System Requirements

- Mac OS X 10.6 (Snow Leopard) and 10.7 (Lion), 64-bit only
- Linux RHEL 5.4, 32-bit or 64-bit
- Windows XP or Windows 7, 32-bit or 64-bit



NOTE: Other operating systems are likely to work.

New Features

There are no new features in this release.

Feature Enhancements

There are no feature enhancements in this release.

Fixed Bugs

BUG ID 35191 - When Windows machines were connected to a RAID array, the server failed to start due to system ID conflicts. This was a bug in RLM 9.4 BL3 and earlier. FLT has been updated to use RLM 9.4 BL4, which fixes the problem.

Known Issues and Workarounds

There are no known issues in this release.

FLT 7.0v2

This is a maintenance release of FLT, with feature enhancements and several bug fixes.

Release Date

October 2012

System Requirements

- Mac OS X 10.6 (Snow Leopard) and 10.7 (Lion), 64-bit only
- Linux RHEL 5.4, 32-bit or 64-bit
- Windows XP or Windows 7, 32-bit or 64-bit



NOTE: Other operating systems are likely to work.

New Features

There are no new features in this release.

Feature Enhancements

- Linux 64-bit only: The RLM server limit on client connections has been increased to 32,000.
- BUG ID 26534 - Generated log output from failed license installs has been improved to help diagnose issues.
- BUG ID 26911 - The FLT installer now lists any files that exist on a target machine that are blocking installation, such as previous FLT versions.
- BUG ID 30524 - If a license with an invalid ID is supplied, the FLU now reports the expected ID in the error report.
- BUG ID 30527 - The FLU now displays details of how to proceed if more than one System ID is found.

Fixed Bugs

- BUG ID 26331/26920 - It was not possible to copy, cut, or paste from the FLU installation window using keyboard shortcuts or the right-click menu.
- BUG ID 29154 - Windows 7 only: The port exception instructions were incorrect in the FLT documentation.

Known Issues and Workarounds

There are no known issues in this release.

FLT 7.0v1

This is a major new release of FLT, with several new features and feature enhancements.

Release Date

May 2012

System Requirements

- Mac OS X 10.6 (Snow Leopard) and 10.7 (Lion), 64-bit only
- Linux RHEL 5.4, 32-bit or 64-bit
- Windows XP or Windows 7, 32-bit or 64-bit



NOTE: Other operating systems are likely to work.

New Features

- All functionality previously split between FLT 6.0 and FFT 5.0 is now included in FLT 7.0.
- The Foundry License Utility (FLU) merges all previous utility applications into one. The FLU is fully backwards compatible, and you can use it to manage existing license servers.
- Both FLEXlm and RLM servers are now installed as one.

Feature Enhancements

- Enhanced license installation reporting.
- Improved diagnostics reporting.
- There is now a command line interface for all operating systems.
- The server log is displayed in the FLU interface and on the command line.

Fixed Bugs

There are no fixed bugs in this release.

Known Issues and Workarounds

There are no known issues in this release.

FLT 6.0v4

This is the fourth release of the Foundry Licensing Tools (FLT) addressing issues that arose during previous builds.

Release Date

October 2011

System Requirements

- Mac OS X (10.5 (Leopard) and 10.6 (Snow Leopard))
- Linux Centos 4.5 (32-bit or 64-bit)
- Windows XP or Windows 7



NOTE: Other operating systems are likely to work.

New Features

There are no new features in this release.

Feature Enhancements

There are no feature enhancements in this release.

Fixed Bugs

- The installer failed to install the RLM License Server on Mac OS 10.7 (Lion). While this bug has been resolved, Mac OS 10.7 (Lion) is not yet fully supported.
- Linux 64-bit: The license server was unable to cope with more than 1000 simultaneous license checkouts.
- Linux: The default file descriptor limit has been increased to 10240 in the **foundryrlmserver** start up script.

Known Issues and Workarounds

- BUG ID 23186 - Mac only: RLM License Server is limited to approximately 247 checkouts.

FLT 6.0v3

This is the third release of the Foundry Licensing Tools (FLT) addressing issues that arose during previous builds.

Release Date

November 2010

System Requirements

- Mac OS X (10.5 (Leopard) and 10.6 (Snow Leopard))
- Linux Centos 4.5 (32-bit or 64-bit)
- Windows XP or Windows 7.



NOTE: Other operating systems are likely to work.

New Features

There are no new features in this release.

Feature Enhancements

There are no feature enhancements in this release.

Fixed Bugs

- The default RLM Web Server (5054) and Foundry License Server (5053) ports could cause issues at startup with other servers present on the network.

To avoid conflicts with other servers that may be present:

- The default **RLM Web Server** port has changed to **4102**.
- The default **Foundry License Server** port has changed to **4101**.
- Setting the foundry_LICENSE_LOG environment variable was being ignored.
- The Foundry License Diagnostic Tool was not correctly determining the status of the server on Linux.
- The Foundry License Diagnostic Tool was not correctly diagnosing client license file issues.

FLT 6.0v2

This was an internal build of the Foundry Licensing Tools (FLT).

Release Date

November 2010

System Requirements

- Mac OS X (10.5 (Leopard) and 10.6 (Snow Leopard))
- Linux Centos 4.5 (32-bit or 64-bit)
- Windows XP or Windows 7.



NOTE: Other operating systems are likely to work.

New Features

There are no new features in this release.

Feature Enhancements

There are no feature enhancements in this release.

Fixed Bugs

This section will contain descriptions of fixed bugs in future releases.

FLT 6.0v1

This is the first release of the Foundry Licensing Tools (FLT).

Release Date

November 2010

System Requirements

- Mac OS X (10.5 (Leopard) and 10.6 (Snow Leopard))
- Linux Centos 4.5 (32-bit or 64-bit)
- Windows XP or Windows 7.



NOTE: Other operating systems are likely to work.

New Features

This section will contain descriptions of new features in future releases.

Feature Enhancements

This section will contain descriptions of feature enhancements in future releases.

Fixed Bugs

This section will contain descriptions of fixed bugs in future releases.

Appendix B: License Syntax

This section describes the various syntax requirements for the Foundry Licensing Tools (FLT).

Node Locked License Syntax

FLEXIm

A node locked or uncounted FLEXIm license looks like this:

```
INCREMENT furnace_ofx_i foundry 3.0 5-jul-2012 \  
uncounted HOSTID=000ea641d7a1 ISSUED=5-jun-2012 \  
SIGN="03C7 5A34 BDE8 D421 6C2B 8111 8151 972A \  
14E2 C143 4C00 741F 730D 784A D392 B1D9 9C3F 03FC \  
DB2A E432 5EA7"
```

Node locked FLEXIm licenses are broken down into nine parts:

INCREMENT - indicates the start of a FLEXIm license feature.

furnace_ofx_i - the product to be licensed. In this example, it is Furnace for Nuke interactive. A background render license would be furnace_ofx_r.

foundry - the vendor name. All licenses from The Foundry must contain the vendor name foundry.

3.0 - the version number of the product to be licensed. This licenses all features with a version number equal to or less than 3.0.

For maintenance-based products, such as Nuke, the version number is replaced by the maintenance date. All releases built before this date will run until the license timeout. All releases built after this date will not run.

5-jul-2012 - the date when the license expires. If this says permanent, the license never expires.

uncounted - this is a node locked license. Floating licenses have a number in place of the uncounted tag.

HOSTID - also known as the System ID, this is the ethernet (mac) address of the machine to be licensed.

ISSUED=5-jun-2012 - the day the license was made, which may differ from the license start date.

SIGN - the encrypted license key. It represents a unique hash of the information in the license and is used to validate the license.

RLM

A node locked or uncounted RLM license looks like this:

```
LICENSE foundry katana_i 2012.1006 permanent uncounted hostid=000ea641d7a1 share=h
start=6-oct-2012 issued=6-oct-2012 _ck=fbf430af8c
sig="60PG4515BFTJCYAXSYJ6GTUJ3B9NRRGF3VUUKD022M0BXU48SSESUGSAFJ8BAD5BN883526ETKQ0"
```

Node locked RLM licenses are broken down into 11 parts:

LICENSE - indicates the start of an RLM license feature.

foundry - the vendor name. All licenses from The Foundry must contain the vendor name foundry.

katana_i - the product to be licensed. In this example, it's a Katana interactive license. A background render license would be katana_r.

2012.1006 - the maintenance date. All Katana releases built before this date will run until the license timeout. All releases built after this date will not run.

For non-maintenance products, this is often just the version of the product, for example 3.0.

permanent - this is a permanent license. If this field were a date 5-jul-2012, it would be a temporary license with that expiry date.

uncounted - this is a node locked license. Floating licenses have a number in place of the uncounted tag.

hostid - also known as the System ID, this is the ethernet (mac) address of the machine to be licensed.

share - this indicates how multiple checkouts from the same client machine are treated. **share=h** indicates licenses are shared by the same host.

start=6-oct-2012 - the date when the license starts. This date may be in the future.

issued - the day the license was made, which may differ from the license start date.

ck and sig - the encrypted license key. It represents a unique hash of the information in the license and is used to validate the license.

Floating License Syntax

FLEXlm

A floating or counted FLEXlm license looks like this:

```
SERVER <server_name> <FLEXlm system ID> <server port>
VENDOR foundry OPTIONS=<file> PORT=<vendor port>
INCREMENT nuke_i foundry 2012.1006 5-jul-2012 5 \
START=5-jun-2012 SIGN="00FF 6A1B 735B A476 2069 0A10 6894 4903 \
E2CF A238 7A01 1A15 1808 7BCF 346C F59E 8899 F53C 2B13 E204 C7FD"
```

Floating licenses are broken down into a SERVER line, a VENDOR line, and one or more INCREMENT lines:

SERVER - the server line indicates which server may serve the floating licenses in this license file:

- <server name>, also known as the hostname, is the name of the license server, for example **red**.
- <FLEXlm system ID>, also known as lmhostid or the System ID, is a unique number for that machine.
- <server port> is the user-defined server port number over which requests from the client are made to the lmgrd daemon.

VENDOR - The vendor line indicates which vendor made the license. The vendor line helps decode the license line for The Foundry's specific licensing keys and identify the vendor licensing daemon.

- OPTIONS=<file> is the plain text file that controls the behavior of the server. Specifying an options file in the license is optional.
- PORT=<vendor port> is the user-defined port over which the vendor daemon communicates to the client. If left blank, a port number is picked for you.



NOTE: The server port number and the vendor port number **MUST** be different.

INCREMENT - license feature line. The only difference from a node locked license is that **uncounted** is replaced with the number of available floating licenses.

The above license works on any five hosts simultaneously. It licenses versions of Nuke built before 6 October 2012. It starts on 5 June 2012 and expires on 5 July 2012.

RLM

A floating or counted RLM license looks like this:

```
HOST <server_name> <server host id> <port>
ISV foundry <options file> <port>
LICENSE foundry mari_i 2012.1006 permanent 10 share=h start=6-oct-2012 issued=6-oct-
2012 _ck=fb063057fd
sig="60PG451E0VM5S81E5EWMRYM8E82CMKYR6SSB93P822M0AT1UU7FWA85M9P34UKXK4HMD7ERG65YA0"
```

Floating licenses are broken down into a HOST line, an ISV line, and one or more LICENSE lines:

HOST - The host line indicates which server may provide the floating licenses in the license file.

- <server_name>, also known as the hostname, is the name of the license server, for example **red**.
- <server host id>, also known as the rlmhostid or System ID, is a unique number for that machine.

- <port> is the user-defined server port number over which requests from the client are made to the RLM daemon.

ISV - The ISV line indicates which vendor made the license. The vendor line helps decode the license line for The Foundry's specific licensing keys and identify the vendor licensing daemon.

- <options file> is the plain text file that controls the behavior of the server. Specifying an options file in the license is optional.
- <port> is the user-defined port over which the vendor daemon communicates to the client. If left blank, the port number is picked for you.



NOTE: The host port number and the ISV port number **MUST** be different, and remember to avoid port 4102, which is reserved for the web server.

LICENSE - license feature line. The only difference from a node locked license is that **uncounted** is replaced with the number of available floating licenses and the hostid is omitted from the LICENSE block.

The above license works on any 10 hosts simultaneously. It licenses all Mari releases built before 6 October 2012 and it begins 6 October 2012.

Client License Syntax

FLEXlm

Client FLEXlm licenses typically have just three lines, which may be:

```
SERVER <server name> <server host id> <port number>
VENDOR foundry
USE_SERVER
```

or

```
SERVER <server_name> any <port number>
VENDOR foundry
USE_SERVER
```

RLM

Client RLM licenses typically have just one line, which may be:

```
HOST <server name> <server host id> <port number>
```

or

```
HOST <server name> any <port number>
```


Appendix C: FLT Variables

This section describes the environment variables that the Foundry Licensing Tools (FLT) recognize.

Environment Variables FLT Recognizes

There are many occasions when you might need to set an environment variable to tailor the functionality of FLT. The following table lists the environment variables FLT recognizes.

FLEXlm Environment Variable	RLM Environment Variable	Description
FOUNDRY_LICENSE_FILE	foundry_LICENSE	Sets the location of the license file. If you move your license file, you can set this to point to the new location. You can also use this to point client machines to a floating license on a license server machine.
FOUNDRY_LICENSE_LOG	foundry_LICENSE_LOG	Sets the location of the log file that gets generated if there are problems with licenses.

FLEXlm Environment Variable	RLM Environment Variable	Description
FOUNDRY_HEARTBEAT_DISABLE	foundry_HEARTBEAT_DISABLE	<p>By default, floating licenses are given back to the server only if the product exits or is deleted/unloaded from the client. If you want your license to go back to the server if you don't use it for a while, you can set this environment variable to true.</p> <p>If you disable the heartbeat, you must also set a TIMEOUT value in the options file, so that licenses are returned to the server correctly. See Setting a TIMEOUT or TIMEOUTALL Period.</p> <div>  <p>NOTE: The heartbeat ensures the communication between the server and client persists in a stable fashion and therefore should be disabled with caution, otherwise users may find their licenses being withdrawn unexpectedly.</p> </div>

Setting Environment Variables

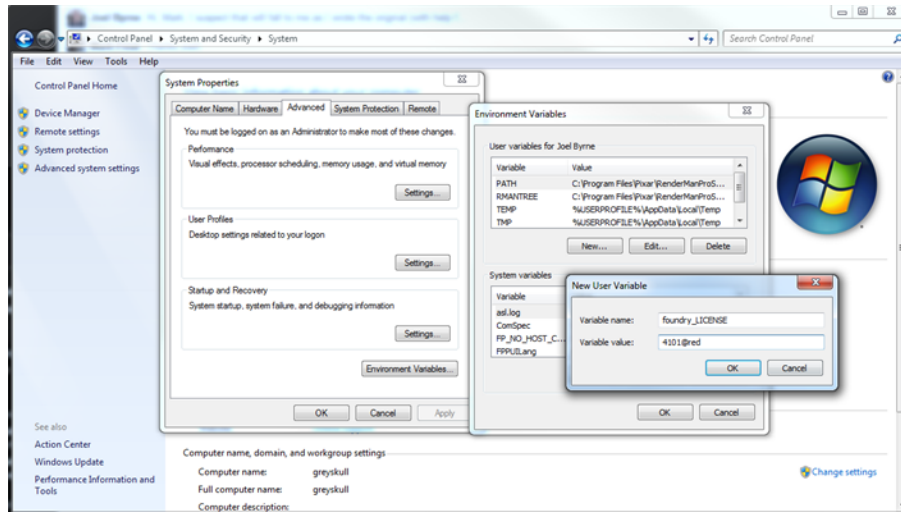
Of course, how you set environment variables differs for each operating system. Here's a brief guide if you can't find your systems administrator.



NOTE: In the following examples, we describe setting an environment variable for an RLM-based license. This is done using the environment variable **foundry_LICENSE**; however, if your product uses FLEXlm licensing, the environment variable you need to set is **FOUNDRY_LICENSE_FILE**. All other steps are exactly the same.

Windows

1. Go to **Start > Control Panel > System and Security > System**.
2. Click **Advanced system settings** in the left-hand panel and then the **Environment Variables** button. You can specify system-wide variables that all users will pick up or user variables to restrict the environment variable to one particular user.
3. Click on **New** and enter the variable name and value.



Mac OS X

You can easily set an environment variable that is active in one terminal only:

1. The procedure for setting an environment variable depends on what your default shell is. To get the name of the shell you are using, launch a terminal (**Applications > Utilities > Terminal**) and enter:

```
echo $SHELL.
```

2. Depending on the output of the previous step, do one of the following:

- If your shell is a csh or tcsh shell, enter:

```
setenv foundry_LICENSE /tmp/foundry.lic
```

- If your shell is a bash or ksh shell, enter:

```
export foundry_LICENSE=/tmp/foundry.lic
```

You then need to run the product from the same terminal that you used to set the environment variable. If you open another terminal, this environment variable is not set in that terminal unless you type it in there too.

For a more permanent solution, you can set an environment variable for all processes launched by a specific user by creating an environment file in the user's home directory:

```
~/MacOSX/environment.plist
```



NOTE: The tilde (~) represents the home directory of the target user, and the command is case sensitive, so take care to copy the string exactly.

You have to create the **.MacOSX** directory yourself using a terminal (by typing **mkdir .MacOSX** in your home directory). You also have to create the environment file yourself. The environment file is actually in XML/plist format (make sure to add the **.plist** extension to the end of the filename or this won't work). An example environment file is shown below. The file can be created using **/Developer/Applications/Utilities/PropertyListEditor.app** or you can use a text editor if you're careful with the formatting. We can also send you one if you wish.

```
<?xml version="1.0" encoding="UTF-8"?>
```

```
<!DOCTYPE plist PUBLIC "-//Apple Computer//DTD PLIST 1.0//EN"
"http://www.apple.com/DTDs/PropertyList-1.0.dtd">
<plist version="1.0">
<dict>
<key>foundry_LICENSE</key>
<string>/tmp/foundry.lic</string>
</dict>
</plist>
```

In this case we set the environment variable `foundry_LICENSE` to `/tmp/foundry.lic`. Note also that the environment variable is only active once you've logged out and logged back in.

Linux

1. The procedure for setting an environment variable depends on what your default shell is. To get the name of the shell you are using, launch a shell and enter:
`echo $SHELL.`
2. Depending on the output of the previous step, do one of the following:
 - If your shell is a `csh` or `tcsh` shell, enter:
`setenv foundry_LICENSE /tmp/foundry.lic`
 - If your shell is a `bash` or `ksh` shell, enter:
`export foundry_LICENSE=/tmp/foundry.lic`
3. You then need to run the product from the same terminal that you used to set the environment variable. If you open another terminal, this environment variable is not set in that terminal unless you type it in there too.
4. To make this permanent for any shell launched, you can edit your **.cshrc**, **.tcshrc**, **.bashrc**, or **.kshrc** file in your home directory.
5. If you want it to be system wide, then **/etc/profile** can be used (or **/etc/environment** on some flavors of Linux).

Appendix D: EULA

End User License Agreement (EULA)

PLEASE READ THIS EULA CAREFULLY BEFORE ORDERING OR DOWNLOADING OR USING ANY SOFTWARE PRODUCTS OF THE FOUNDRY. YOUR ATTENTION IS PARTICULARLY DRAWN TO CLAUSES 12 AND 13 WHERE WE LIMIT OUR LIABILITY TO USERS OF OUR SOFTWARE PRODUCTS.

IMPORTANT NOTICE TO ALL USERS: BY DOWNLOADING AND/OR USING THIS SOFTWARE YOU ACKNOWLEDGE THAT YOU HAVE READ THIS EULA, UNDERSTAND IT AND AGREE TO BE BOUND BY ITS TERMS AND CONDITIONS. IF YOU DO NOT AGREE TO THE TERMS OF THIS EULA DO NOT DOWNLOAD, INSTALL, COPY OR USE THE SOFTWARE.

IMPORTANT NOTICE TO CONSUMERS WHO PURCHASE SOFTWARE PRODUCTS DIRECT FROM THE FOUNDRY: YOU HAVE THE RIGHT TO WITHDRAW FROM YOUR TRANSACTION WITH THE FOUNDRY WITHOUT CHARGE AND WITHOUT REASON AT ANY TIME BEFORE DOWNLOADING OUR SOFTWARE PRODUCT(S). HOWEVER YOU WILL LOSE THIS RIGHT ONCE YOU BEGIN TO DOWNLOAD OUR SOFTWARE PRODUCT(S). THIS DOES NOT AFFECT YOUR CONSUMER RIGHTS IN RELATION TO DEFECTIVE PRODUCTS OR SERVICES.

This END USER LICENSE AGREEMENT ("**EULA**") is, in cases where you purchase our product(s) direct from The Foundry, incorporated into the agreement between The Foundry Visionmongers Limited, a company registered in England and Wales, ("**The Foundry**"), and you, as either an individual or a single company or other legal entity ("**Licensee**") on the terms of which you will purchase the products and services of The Foundry (the "**Agreement**"). In cases where you purchase our product(s) from one of our resellers, the use of the term "Agreement" in this EULA refers to the arrangements between The Foundry and Licensee on which Licensee is permitted to use The Foundry's product(s), including this EULA.

The Foundry reserves the right to refuse to grant a License (as defined in clause 1.1) to any Licensee who has failed to pay any sum due either to The Foundry or to a reseller of The Foundry either in connection with the Agreement or in connection with any other software license to use any Software product(s) of The Foundry.

1. GRANT OF LICENSE

1.1 Subject to the limitations of clause 3 and all the other terms of the Agreement, The Foundry grants to Licensee a limited, non-transferable (subject to clause 2.1(b) below) and non-exclusive license to download, install and use a machine readable, object code version (subject to clauses 3 and 4 below) of the software program(s) purchased by

Licensee (the "**Software**") and any accompanying user guide and other documentation (the "**Documentation**"), solely for Licensee's own internal purposes (the "**License**"); provided, however, that Licensee's right to download, install and use the Software and the Documentation is limited to those rights expressly set out in this EULA.

1.2 Some types of license models set out in clause 2.1 limit the installation and use of the Software to the country in which Licensee is based at the date of purchase (the "**Home Country**"), unless otherwise agreed in writing. Notwithstanding such limits, Licensee may still use the Software outside the Home Country if traveling or working outside the Home Country on a temporary basis provided that such use does not exceed 70 days in aggregate in any rolling twelve month period or, in the case of any license which lasts for less than twelve months, does not exceed the number of days representing 20% of the term of the license.

1.3 Only to the extent that is proportionate to, and reasonably necessary to support, Licensee's licensed use of the Software in accordance with the Agreement, Licensee may (provided valid license keys have been obtained) install the Software on more than one computer, provided always that Licensee's concurrent use of different installations of the Software does not exceed the number of valid Licenses that Licensee has paid for or licensed (as applicable).

2. LICENSE MODELS

2.1 For each Software product purchased from The Foundry, the License will be one of the following types of license, and subject to the following terms and conditions. Please note that some licensing models set out below do not apply to certain Software products of The Foundry. Whichever licensing model applies, Licensee shall not at any one time use more copies of the Software than the total number of valid licenses purchased or licensed by Licensee (as applicable).

(a) "**Node Locked License**"

If Licensee purchases a Node Locked License, Licensee will install and use only a single copy of the Software on only one computer at a time, which may be located anywhere in the Home Country.

(b) "**Individual License**"

If Licensee purchases an Individual License, Licensee warrants and represents that Licensee is a natural person and that only Licensee will use the Software. Licensee may transfer or assign ("**transfer**") the Individual License to another natural person ("**Assignee**") subject to Licensee: (i) notifying The Foundry of such transfer and obtaining The Foundry's express written consent, (ii) paying an administrative fee with respect to such transfer as may be required by The Foundry, and (iii) after transferring a single copy of the Software to the Assignee, deleting any copies of the Software that Licensee may have in Licensee's possession, custody or power. An Individual License entitles Licensee to use the Software on only one computer at a time, which may be located anywhere and is not restricted to the Home Country.

(c) "**Floating License**"

If Licensee purchases a Floating License, use of the Software may be at any site in the Home Country.

(d) "**Login-Based License**"

If Licensee purchases a Login-Based License, Licensee warrants and represents that Licensee is a natural person and that only Licensee shall use the Software. Licensee will be issued with log in details and may use the Software on any number of computers (but not simultaneously).

2.2 Some of the Software may be made available at concessionary rates or free of charge (as applicable) as follows:

(a) **“Educational License”**

If Licensee has purchased the Software on the discounted terms of The Foundry’s Educational Policy published on its website (the **“Educational Policy”**), Licensee warrants and represents to The Foundry as a condition of the Educational License that: (i) (if Licensee is a natural person) he or she is a part-time or full-time student at the time of purchase and will not use the Software for any commercial, professional or for-profit purposes; (ii) (if the Licensee is not a natural person) it is an organization that will use the Software only for the purpose of training and instruction, and for no other purpose, and (iii) Licensee will at all times comply with the Educational Policy (as such policy may be amended from time to time). Unless the Educational License is a Floating License, Licensee shall use the Software on only one computer at a time.

(b) **“Non-Commercial License”**

If the License is a Non-Commercial License, Licensee warrants and represents that Licensee is a natural person, that they will only access and/or use one copy of a Non-Commercial License for personal, recreational and non-commercial purposes and that only Licensee will use the Software. Under a Non-Commercial License, Licensee will not use the Software: (a) in conjunction with any other copies or versions of the Software, under any type of License model; (b) for any commercial, professional, for-profit and/or on-sale purpose or otherwise to provide any commercial service(s) to a third party (whether or not for financial or other reward and including for education, instruction of or demonstration to any third party for commercial purposes); (c) in the course of any employment or business undertaking of Licensee; (d) on any commercial premises during business hours (except where use of the Software is solely for a personal, recreational, educational or other non-commercial purpose); and/or (e) to create any commercial tools or plug ins.

(c) **“MODO Steam Edition”**

A version of MODO with limited functionality as described in the Documentation is available to purchase on discount terms through Valve Corporation’s Steam store. If Licensee has purchased such version, Licensee warrants and represents to The Foundry as a condition of the Agreement that: (i) Licensee is a natural person; and (ii) Licensee will use the Software strictly through Steam and only for personal, recreational and non-commercial use, except only that if Licensee uses the Software to create assets and content Licensee may sell such assets and content through Valve’s Steam Workshop.

(d) **“MODO indie” and “MARI indie”**

Variants of MODO and MARI with limited functionality as described in the Documentation are available to purchase on discount terms through Valve Corporation’s Steam store. If Licensee has purchased such a variant, Licensee warrants and represents to The Foundry as a condition of the Agreement that: (i) Licensee is a natural person; or (ii) Licensee is an entity in the direct ownership of a single natural person; (iii) Licensee will only access and/or use one copy of either variant; and (iv) only Licensee will use the Software.

(e) "Trial License"

Licensee may register for a "Trial License" of the Software (not available for all products or in all regions or markets). A Trial License lasts a limited specified period on the expiry of which the Software will automatically cease to function. Licensee will use the Software on only one computer at a time.

(f) "Free License"

Licensee may register for a "Free License" of selected Software from The Foundry (not available for all Software products or in all regions or markets). A Free License lasts for a limited specified period on the expiry of which the Software will cease to function. Usually, a replacement License to cover a new, time limited, period will be issued by The Foundry. Licensee will use the Software under a Free License on only one computer at a time.

(g) "Personal Learning Edition License"

If the Software is a Personal Learning Edition ("**PLE**"), it will not require a license key to be issued to Licensee and will have limited functionality as described in the Documentation. Licensee may use it only for the purpose of personal or internal training and instruction, and for no other purpose. PLE versions of the Software may not be used for commercial, professional or for-profit purposes including, for the avoidance of doubt, the purpose of providing training or instruction to third parties. Licensee shall use the Software on only one computer at a time.

2.3 If Licensee has purchased a License that permits "non-interactive" use of the Software ("**Headless Rendering**"), Licensee is authorized to use a non-interactive version of the Software for rendering purposes only (i.e. without a user, in a non-interactive capacity) and shall not use such Software on workstations or otherwise in a user-interactive capacity. Headless Rendering is not available on all products. In all cases except MODO (in respect of which there is no limit on the amount of Headless Rendering allowed), Headless Rendering licenses are limited to one computer such that the number of computers on which Headless Rendering can be carried out is limited to the number of valid Licenses that have been purchased.

3. RESTRICTIONS ON USE

Please note that in order to guard against unlicensed use of the Software, a license key is required to access and enable the Software (other than Software which is licensed under the Personal Learning Edition model – see clause 2.2 (g) above). Licensee is authorized to use the Software in machine readable, object code form only (subject to clause 4), and Licensee shall not: (a) assign, sublicense, sell, distribute, transfer, pledge, lease, rent, lend, share or export the Software, the Documentation or Licensee's rights under this EULA; (b) alter or circumvent the license keys or other copy protection mechanisms in the Software or reverse engineer, decompile, disassemble or otherwise attempt to discover the source code of the Software; (c) (subject to clause 4) modify, adapt, translate or create derivative works based on the Software or Documentation; (d) use, or allow the use of, the Software or Documentation on any project other than a project produced by Licensee (an "**Authorized Project**") or to provide a service (whether or not any charge is made) to any third party; (e) allow or permit anyone (other than Licensee and Licensee's authorized employees to the extent they are working on an Authorized Project) to use or have access to the Software or Documentation; (f) copy or install the Software or Documentation other than as expressly provided for in this EULA; or (g) take any action, or fail to take action, that could adversely affect the trademarks, service marks, patents, trade secrets, copyrights or other intellectual property rights of The Foundry or any third party with

intellectual property rights in the Software (each, a "Third Party Licensor"). For purposes of this clause 3, the term "Software" shall include any derivatives of the Software.

Unless Licensee has purchased an Individual License or a Login-Based License, if the Software is moved from one computer to another, the issuing of replacement or substituted license keys is subject to and strictly in accordance with The Foundry's License Transfer Policy, which is available on The Foundry's website and which requires a fee to be paid in certain circumstances. The Foundry may from time to time and at its sole discretion vary the terms and conditions of the License Transfer Policy.

4. SOURCE CODE

Notwithstanding that clause 1 defines "Software" as an object code version and that clause 3 provides that Licensee may use the Software in object code form only:

4.1 if The Foundry has agreed to license to Licensee (including by way of providing SDKs, upgrades, updates or enhancements/customization) source code or elements of the source code of the Software, the intellectual property rights in which belong either to The Foundry or to a Third Party Licensor ("**Source Code**"), Licensee shall be licensed to use the Source Code as Software on the terms of this EULA and: (a) notwithstanding clause 3 (c), Licensee may use the Source Code at its own risk in any reasonable way for the limited purpose of enhancing its use of the Software solely for its own internal business purposes and in all respects in accordance with this EULA; (b) Licensee shall in respect of the Source Code comply strictly with all other restrictions applying to its use of the Software under this EULA as well as any other restriction or instruction that is communicated to it by The Foundry at any time during the Agreement (whether imposed or requested by The Foundry or by any Third Party Licensor);

4.2 to the extent that the Software links to any open source software libraries ("**OSS Libraries**") that are provided to Licensee with the Software, nothing in the Agreement shall affect Licensee's rights under the licenses on which the relevant Third Party Licensor has licensed the OSS Libraries, as stated in the Documentation. To the extent that Third Party Licensors have licensed OSS Libraries on the terms of v2.1 of the Lesser General Public License issued by the Free Software Foundation (see <http://www.gnu.org/licenses/lgpl-2.1.html>) (the "**LGPL**"), those OSS Libraries are licensed to Licensee on the terms of the LGPL and are referred to in this clause 4.2 as the LGPL Libraries. The Foundry will at any time during the three year period starting on the date of the Agreement, at the request of Licensee and subject to Licensee paying to The Foundry a charge that does not exceed The Foundry's costs of doing so, provide Licensee with the source code of the LGPL Libraries (the "**LGPL Source**") in order that Licensee may modify the LGPL Libraries in accordance with the LGPL, together with certain object code of the Software necessary to enable Licensee to re-link any modified LGPL Library to the Software (the "**Object**"); and

4.3 notwithstanding any other term of the Agreement, The Foundry gives no express or implied warranty, undertaking or indemnity whatsoever in respect of the Source Code, the OSS Libraries (including the LGPL Libraries), the LGPL Source or the Object, all of which are licensed on an "as is" basis, or in respect of any modification of the Source Code, the OSS Libraries (including the LGPL Libraries) or the LGPL Source made by Licensee ("**Modification**"). Licensee may not use the Object for any purpose other than its use of the Software in accordance with this EULA. Notwithstanding any other term of the Agreement, The Foundry shall have no obligation to provide support, maintenance, upgrades or updates of or in respect of any of the Source Code, the OSS Libraries (including the LGPL Libraries), the LGPL Source, the Object or any Modification. Licensee shall indemnify The Foundry against all liabilities

and expenses (including reasonable legal costs) incurred by The Foundry in relation to any claim asserting that any Modification infringes the intellectual property rights of any third party.

5. BACK-UP COPY

Licensee may store one copy of the Software and Documentation off-line and off-site in a secured location within the Home Country that is owned or leased by Licensee in order to provide a back-up in the event of destruction by fire, flood, acts of war, acts of nature, vandalism or other incident. In no event may Licensee use the back-up copy of the Software or Documentation to circumvent the usage or other limitations set forth in this EULA.

6. OWNERSHIP

Licensee acknowledges that the Software (including, for the avoidance of doubt, any Source Code that is licensed to Licensee) and Documentation and all related intellectual property rights and other proprietary rights are and shall remain the sole property of The Foundry and the Third Party Licensors. Licensee shall not remove, or allow the removal of, any copyright or other proprietary rights notice included in and on the Software or Documentation or take any other action that could adversely affect the property rights of The Foundry or any Third Party Licensor. To the extent that Licensee is authorized to make copies of the Software or Documentation under this EULA, Licensee shall reproduce in and on all such copies any copyright and/or other proprietary rights notices provided in and on the materials supplied by The Foundry hereunder. Nothing in the Agreement shall be deemed to give Licensee any rights in the trademarks, service marks, patents, trade secrets, confidential information, copyrights or other intellectual property rights of The Foundry or any Third Party Licensor, and Licensee shall be strictly prohibited from using the name, trademarks or service marks of The Foundry or any Third Party Licensor in Licensee's promotion or publicity without The Foundry's prior express written approval.

Subject to clause 4.3, The Foundry undertakes (the "**Undertaking**") to defend Licensee or at The Foundry's option settle any claim brought against Licensee alleging that Licensee's possession or use of the Software or Documentation in accordance with the Agreement infringes the intellectual property rights of a third party in the same country as Licensee ("**Claim**") and shall reimburse all reasonable losses, damages, costs (including reasonable legal fees) and expenses incurred by or awarded against Licensee in connection with any such Claim, provided that the Undertaking shall not apply where the Claim in question is attributable to possession or use of the Software or Documentation other than in accordance with the Agreement, or in combination with any hardware, software or service not supplied or specified by The Foundry. The Undertaking is conditional on Licensee giving written notice of the Claim to The Foundry as soon as reasonably possible, cooperating in the defence of the Claim and not making any admission of liability or taking any step prejudicial to the defence of the Claim. If any Claim is made, or in The Foundry's reasonable opinion is likely to be made, against Licensee, The Foundry may at its sole option and expense (a) procure for Licensee the right to continue using the Software, (b) modify the Software so that it ceases to be infringing, (c) replace the Software with non-infringing software, or (d) terminate the Agreement immediately by notice in writing to Licensee and refund the License Fee (less a reasonable sum in respect of Licensee's use of the Software to the date of termination) on return of the Software and all copies by Licensee. The Undertaking constitutes Licensee's exclusive remedy and The Foundry's only liability in respect of any Claim.

7. LICENSE FEE

7.1 Licensee acknowledges that (subject to clause 7.2) the rights granted to Licensee under this EULA are conditional on Licensee's payment in full of the license fee payable in connection with the Agreement or, as the case may be, payable to The Foundry's reseller (the "**License Fee**").

7.2 In the cases of Non-Commercial NUKE, Trial Licenses and Free Licenses, for the avoidance of doubt, the fact that no License Fee may be payable shall not be construed as a waiver by The Foundry of any right or remedy available to it in relation to any breach by Licensee of this EULA or the Agreement, or of any other right or remedy arising under applicable law, all of which are expressly reserved.

8. UPGRADES/ENHANCEMENTS

If the Licensee has paid an annually renewable fee for access to support, upgrades and updates for the Software ("**Annual Upgrade and Support Programme**"), this Agreement is subject to the terms and conditions for the Annual Upgrade and Support Programme available on The Foundry's website. The Foundry may from time to time and at its sole discretion vary the terms and conditions of the Annual Upgrade and Support Programme. The Annual Upgrade and Support Programme is not available for all Software license types and variations.

9. TAXES AND DUTIES

Licensee agrees to pay, and indemnify The Foundry from claims for, any local, state or national tax (exclusive of taxes based on net income), duty, tariff or other impost related to or arising from the transaction contemplated by the Agreement.

10. LIMITED WARRANTY

10.1 Subject to clause 10.3, The Foundry warrants that, for a period of ninety (90) days after Licensee first downloads the Software ("**Warranty Period**"): (a) the Software will, when properly used on an operating system for which it was designed, perform substantially in accordance with the functions described in the Documentation; and (b) that the Documentation correctly describes the operation of the Software in all material respects. If, within the Warranty Period, Licensee notifies The Foundry in writing of any defect or fault in the Software as a result of which it fails to perform substantially in accordance with the Documentation, The Foundry will, at its sole option, either repair or replace the Software, provided that Licensee makes available all the information that may be necessary to identify, recreate and remedy the defect or fault. This warranty will not apply to any defect or fault caused by unauthorised use of or any amendment made to the Software by any person other than The Foundry. If Licensee is a consumer, the warranty given in this clause is in addition to Licensee's legal rights in relation to any Software or Documentation that is faulty or not as described.

10.2 The Foundry does not warrant that the Software or Documentation will meet Licensee's requirements or that Licensee's use of the Software will be uninterrupted or error free.

10.3 If Licensee purchases a license of the Software that is of a fixed term duration, the Warranty Period in clause 10.1 shall apply only to Licensee's first purchase of such license and not to any subsequent renewal(s) even if a renewal involves another download.

11. INDEMNIFICATION

Licensee agrees to indemnify, hold harmless and defend The Foundry, the Third Party Licensors and The Foundry's and each Third Party Licensors' respective affiliates, officers, directors, shareholders, employees, authorized resellers, agents and other representatives from all claims, defence costs (including, but not limited to, legal fees), judgments, settlements and other expenses arising from or connected with any claim that any authorised or unauthorised modification of the Software or Documentation by Licensee or any person connected with Licensee infringes the intellectual property rights or other proprietary rights of any third party.

12. LIMITATION OF LIABILITY TO BUSINESS USERS

This clause applies where Licensee is a business user. Licensee acknowledges that the Software has not been developed to meet its individual requirements, and that it is therefore Licensee's responsibility to ensure that the facilities and functions of the Software as described in the Documentation meet such requirements. The Software and Documentation is supplied only for Licensee's internal use for its business, and not for any re-sale purposes or for the provision of the Software (whether directly or indirectly) to third parties. The Foundry shall not under any circumstances whatever be liable to Licensee, its affiliates, officers, directors, shareholders, employees, agents or other representatives, whether in contract, tort (including negligence), breach of statutory duty, or otherwise, arising under or in connection with the Agreement for loss of profits, sales, business, or revenue, business interruption, loss of anticipated savings, loss or corruption of data or information, loss of business opportunity, goodwill or reputation or any indirect or consequential loss or damage. In respect of any other losses, The Foundry's maximum aggregate liability under or in connection with the Agreement whether in contract, tort (including negligence) or otherwise, shall in all circumstances be limited to the greater of US\$5,000 (five thousand USD) and a sum equal to the License Fee. Nothing in the Agreement shall limit or exclude The Foundry's liability for death or personal injury resulting from our negligence, fraud or fraudulent misrepresentation or for any other liability that cannot be excluded or limited by applicable law. This EULA sets out the full extent of our obligations and liabilities in respect of the supply of the Software and Documentation. Except as expressly stated in this EULA, there are no conditions, warranties, representations or other terms, express or implied, that are binding on The Foundry. Any condition, warranty, representation or other term concerning the supply of the Software and Documentation which might otherwise be implied into, or incorporated in, the Agreement, whether by statute, common law or otherwise, is excluded to the fullest extent permitted by law.

13. LIMITATION OF LIABILITY TO CONSUMERS

This clause applies where Licensee is a consumer. Licensee acknowledges that the Software has not been developed to meet Licensee's individual requirements, and that it is therefore Licensee's responsibility to ensure that the facilities and functions of the Software as described in the Documentation meet such requirements. The Software and Documentation are only supplied for Licensee's domestic and private use. Licensee agrees not to use the Software and Documentation for any commercial, business or re-sale purposes, and The Foundry has no liability to

Licensee for any loss of profit, loss of business, business interruption, or loss of business opportunity. The Foundry is only responsible for loss or damage suffered by Licensee that is a foreseeable result of The Foundry's breach of the Agreement or its negligence but The Foundry is not responsible for any loss or damage that is not foreseeable. Loss or damage is foreseeable if they were an obvious consequence of a breach or if they were contemplated by Licensee and The Foundry at the time of forming the Agreement. Our maximum aggregate liability under or in connection with the Agreement, whether in contract, tort (including negligence) or otherwise, shall in all circumstances be limited to a sum equal to the greater of US\$5,000 (five thousand USD) and a sum equal to the License Fee. Nothing in the Agreement shall limit or exclude The Foundry's liability for death or personal injury resulting from our negligence, fraud or fraudulent misrepresentation or for any other liability that cannot be excluded or limited by applicable law.

14. TERM; TERMINATION

14.1 The Agreement is effective upon Licensee's download of the Software, and the Agreement will remain in effect until termination or expiry. Licensee may terminate the Agreement on written notice to The Foundry if The Foundry is in breach of this Agreement and fails to cure the breach within 10 (ten) working days of receiving notice of such breach. If Licensee breaches the Agreement, The Foundry may terminate the License immediately by notice to Licensee.

14.2 If the Agreement expires or is terminated, the License will cease immediately and Licensee will immediately cease use of any Software and Documentation and either return to The Foundry all copies of the Software and Documentation in Licensee's possession, custody or power or, if The Foundry directs in writing, destroy all such copies. In the latter case, if requested by The Foundry, Licensee shall provide The Foundry with a certificate confirming that such destruction has been completed.

14.3 The Foundry reserves the right to terminate and/or suspend the License as it deems reasonable in its sole discretion by notice to Licensee if it becomes aware that Licensee has failed to pay any sum due either to The Foundry or to a reseller of The Foundry either in connection with the Agreement or in connection with any other Software license to use any product(s) of The Foundry or the Licensee is otherwise in breach of or fails to comply with any term of the Agreement.

14.4 The Foundry may also terminate this EULA if Licensee becomes subject to bankruptcy proceedings, becomes insolvent, or makes an arrangement with Licensee's creditors. This EULA will terminate automatically without further notice or action by The Foundry if Licensee goes into liquidation.

15. CONFIDENTIALITY

Licensee agrees that the Software (including, for the avoidance of doubt, any Source Code that is licensed to Licensee) and Documentation are proprietary to and the confidential information of The Foundry or, as the case may be, the Third Party Licensors, and that all such information and any related communications (collectively, "**Confidential Information**") are confidential and a fundamental and important trade secret of The Foundry and/or the Third Party Licensors. If Licensee is a business user, Licensee shall disclose Confidential Information only to Licensee's employees who are working on an Authorized Project and have a "need-to-know" such Confidential Information, and shall advise any recipients of Confidential Information that it is to be used only as expressly authorized in the Agreement. Licensee shall not disclose Confidential Information or otherwise make any

Confidential Information available to any other of Licensee's employees or to any third parties without the express written consent of The Foundry. Licensee agrees to segregate, to the extent it can be reasonably done, the Confidential Information from the confidential information and materials of others in order to prevent commingling. Licensee shall take reasonable security measures, which measures shall be at least as great as the measures Licensee uses to keep Licensee's own confidential information secure (but in any case using no less than a reasonable degree of care), to hold the Software, Documentation and any other Confidential Information in strict confidence and safe custody. The Foundry may request, in which case Licensee agrees to comply with, certain reasonable security measures as part of the use of the Software and Documentation. This clause shall not apply to any information that is in or comes into the public domain, or was in Licensee's lawful possession before receipt or which Licensee develops independently and without breach of this clause. Licensee acknowledges that monetary damages may not be a sufficient remedy for unauthorized disclosure of Confidential Information, and that The Foundry shall be entitled, without waiving any other rights or remedies, to such injunctive or other equitable relief as may be deemed proper by a court of competent jurisdiction.

16. INSPECTION AND INFORMATION

16.1 Unless Licensee is a consumer, Licensee shall advise The Foundry on demand of all locations where the Software or Documentation is used or stored. Licensee shall permit The Foundry or its authorized agents to audit all such locations during normal business hours and on reasonable advance notice.

16.2 The Software may include mechanisms to collect limited information from Licensee's computer(s) and transmit it to The Foundry. Such information (the "**Information**") may include details of Licensee's hardware, details of the operating system(s) in use on such hardware and the profile and extent of Licensee's use of the different elements of the Software. The Foundry may use the Information to (a) model the profiles of usage, hardware and operating systems in use collectively across its customer base in order to focus development and support, (b) to provide targeted support to individual customers, (c) to ensure that the usage of the Software by Licensee is in accordance with the Agreement and does not exceed any user number or other limits on its use, and (d) to advise Licensee about service issues such as available upgrades and maintenance expiry dates. To the extent that any Information is confidential to Licensee it shall be treated as such by The Foundry when so notified or identified by Licensee when the Information is first provided to The Foundry (whether verbally or in written form). To the extent that any Information constitutes personal data for the purposes of the Data Protection Act 1998 it shall be processed by The Foundry in accordance with that Act and with The Foundry's Privacy Policy (see <http://www.thefoundry.co.uk/privacy/>). Licensee undertakes to make all of users of the Software aware of the uses which The Foundry will make of the Information and of the terms of The Foundry's Privacy Policy.

17. U.S. GOVERNMENT LICENSE RIGHTS

All Software, including all components thereof, and Documentation qualify as "commercial items," as that term is defined at Federal Acquisition Regulation ("**FAR**") (48 C.F.R.) 2.101, consisting of "commercial computer software" and "commercial computer software documentation" as such terms are used in FAR 12.212. Consistent with FAR 12.212 and DoD FAR Supp. 227.7202-1 through 227.7202-4, and notwithstanding any other FAR or other contractual clause to the contrary in any agreement into which this Agreement may be incorporated, a government end user will acquire the Software and Documentation with only those rights set forth in this Agreement. Use of either the Software or Documentation or both constitutes agreement by the government that all Software and

Documentation are “commercial computer software” and “commercial computer software documentation,” and constitutes acceptance of the rights and restrictions herein. The Software is the subject of the following notices:

* Copyright © 2001 - 2016 The Foundry Visionmongers Limited. All Rights Reserved.

* Unpublished-rights reserved under the Copyright Laws of the United Kingdom.

18. SURVIVAL.

Clause 6 and clauses 9 to 20 inclusive shall survive any termination or expiration of the Agreement.

19. IMPORT/EXPORT CONTROLS

To the extent that any Software made available under the Agreement is subject to restrictions upon export and/or re-export from the United States, Licensee agrees to comply with, and not act or fail to act in any way that would violate, applicable international, national, state, regional or local laws and regulations, including, without limitation, the U.S. Export Administration Act and the Export Administration Regulations, the regulations of the U.S. Department of Treasury Office of Foreign Assets Control, and the International Traffic in Arms regulations (collectively, “**U.S. Export Laws**”), and the United States Foreign Corrupt Practices Act, as those laws may be amended or otherwise modified from time to time, and neither The Foundry nor Licensee shall be required under the Agreement to act or fail to act in any way which it believes in good faith will violate any such laws or regulations. Without limiting the foregoing, Licensee agrees that it will not export or re-export, directly or indirectly, The Foundry’s Software or related products and services, or any commodity, technology, technical data, software or service that incorporates, contains or is a direct product of The Foundry’s Software, products and/or services, (i) in violation of the U.S. Export Laws; (ii) to any country for which an export license or other governmental approval is required at the time of export, without first obtaining all necessary export licenses or other approvals; (iii) to any country, or national or resident of a country, to which trade is embargoed by the United States; (iv) to any person or firm on any government agency’s list of blocked, denied or barred persons or entities, including but not limited to the U.S. Department of Commerce’s Denied Persons List and Entities List, and the U.S Treasury Department’s Specially Designated Nationals List; or (v) for use in any nuclear, chemical or biological weapons, or missile technology end-use unless authorized by the U.S. Government by regulation or specific license.

20. MISCELLANEOUS

Unless Licensee is a consumer, the Agreement is the exclusive agreement between the parties concerning its subject matter and supersedes any and all prior oral or written agreements, negotiations, or other dealings between the parties concerning such subject matter. Licensee acknowledges that Licensee has not relied upon any representation or collateral warranty not recorded in the Agreement inducing it to enter into the Agreement. The Agreement may be modified only in writing, by The Foundry, at any time. The failure of either party to enforce any rights granted under the Agreement or to take action against the other party in the event of any such breach shall not be deemed a waiver by that party as to subsequent enforcement of rights or subsequent actions in the event of future breaches. The Agreement and any dispute or claim arising out of or in connection with it or its subject matter or formation (including, unless Licensee is a consumer, non-contractual disputes or claims) shall be governed by, and construed in accordance with English Law and the parties irrevocably submit to the non-exclusive jurisdiction of the English

Courts, subject to any right that a consumer may have to bring proceedings or to have proceedings brought against them in a different jurisdiction.

If The Foundry fails to insist that Licensee performs any obligation under the Agreement, or delays in doing so, that will not mean that The Foundry has waived its rights.

Unless Licensee is a consumer, Licensee agrees that The Foundry may refer to Licensee as a client or a user of the Software, may display its logo(s) for this purpose and may publish quotations and testimonials from Licensee, its directors, partners, officers or employees. The Foundry agrees to promptly cease any such use on Licensee's written request.

The Foundry and Licensee intend that each Third Party Licensor may enforce against Licensee under the Contracts (Rights of Third Parties) Act 1999 (the "Act") any obligation owed by Licensee to The Foundry under this EULA that is capable of application to any proprietary or other right of that Third Party Licensor in or in relation to the Software. The Foundry and Licensee reserve the right under section 2(3)(a) of the Act to rescind, terminate or vary this EULA without the consent of any Third Party Licensor.

21. COMPLAINTS & ONLINE DISPUTE RESOLUTION PLATFORM

We hope that you are satisfied with any Software purchase made or service received from The Foundry, but if you have a complaint, in the first instance, please contact us on info@thefoundry.co.uk or through our Support Portal: <https://supportportal.thefoundry.co.uk/hc/en-us> (for technical support and bug reports), or you can request a call back from the Sales team here: <https://www.thefoundry.co.uk/about-us/contact-us/>. We will do our best to resolve the issue but if you are still not happy with our response, you may seek to resolve it using the Online Dispute Resolution Platform at www.ec.europa.eu/consumers/odr/.

Last updated March 30, 2016.

Copyright © 2016 The Foundry Visionmongers Limited.

All Rights Reserved. Do not duplicate.